



Accelerating success.



**FOR LEASE**

*Corporate Center I*  
**4460 Corporation Lane**  
**Virginia Beach, VA**

**Pat Mugler**

Executive Vice President  
+1 757 228 1831  
[pat.mugler@colliers.com](mailto:pat.mugler@colliers.com)

**Ricky Anderson**

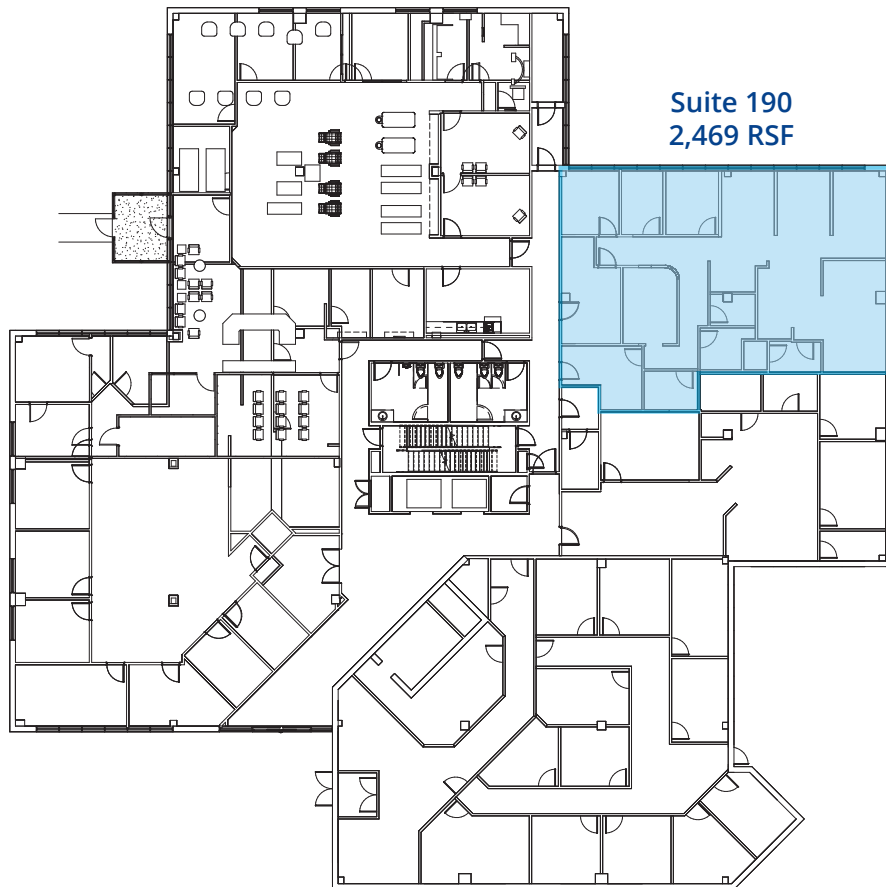
Executive Vice President  
+1 757 217 1892  
[ricky.anderson@colliers.com](mailto:ricky.anderson@colliers.com)

150 West Main Street  
Suite 1100  
Norfolk, VA 23510  
P: +1 757 490 3300

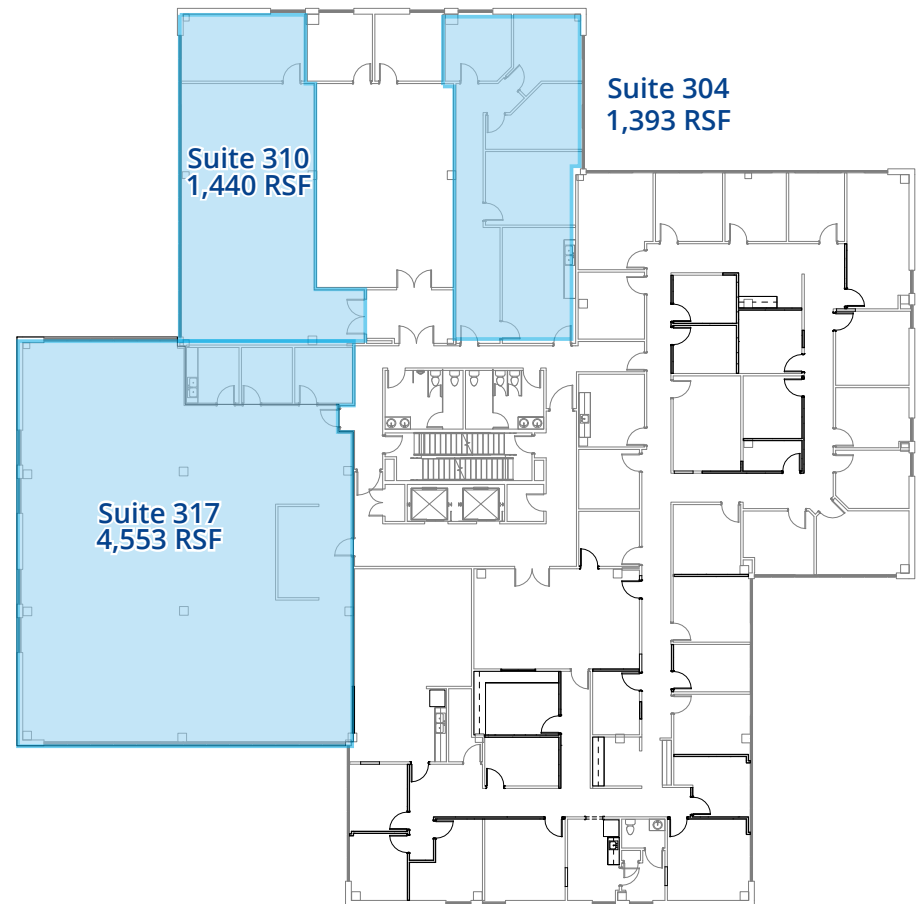
# Features

- Three story office building totaling  $\pm$  51,123 RSF
- Pembroke/Town Center submarket location surrounded by retail amenities, restaurants, and banks
- Building signage opportunities
- Easy access to I-264 via Independence Boulevard/ Virginia Beach Boulevard
- Parking ratio of  $\pm$  5/1,000 SF
- Rental Rate: \$20.50/RSF, Full Service

**First Floor Plan:** Suite 190: 2,469 RSF



**Third Floor Plan:** Suite 304: 1,393 RSF  
Suite 310: 1,440 RSF  
Suite 317: 4,553 RSF





150 West Main Street  
Suite 1100  
Norfolk, VA 23510  
P: +1 757 490 3300



**Pat Mugler**  
Executive Vice President  
+1 757 228 1831  
pat.mugler@colliers.com

**Ricky Anderson**  
Executive Vice President  
+1 757 217 1892  
ricky.anderson@colliers.com

This document/email has been prepared by Colliers for advertising and general information only. Colliers makes no guarantees, representations or warranties of any kind, expressed or implied, regarding the information including, but not limited to, warranties of content, accuracy and reliability. Any interested party should undertake their own inquiries as to the accuracy of the information. Colliers excludes unequivocally all inferred or implied terms, conditions and warranties arising out of this document and excludes all liability for loss and damages arising there from. This publication is the copyrighted property of Colliers and/or its licensor(s). © 2025. All rights reserved. This communication is not intended to cause or induce breach of an existing listing agreement.