

For Lease > Retail Space

Suite 5:
1,449 SF

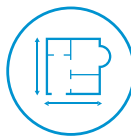
3511 SE J Street, Bentonville | Arkansas

Remaining 1,449 square feet available at the Corner Shoppes in Bentonville, AR. Highly visible shopping center at busy intersection on SE Walton Blvd and J Street. Near the Walmart and Sam's Club home offices and easy access from several dense high-income neighborhoods.



\$20.50 PSF NNN

FEATURES



Suite 5: 1,449 square-feet



Located on busy intersection with traffic light



40,000 AADT (2018) on SE Walton Boulevard near shopping center

Contact us:

Alan W. Cole

Principal | Arkansas

D: +1 479 845 1505

C: +1 479 644 5849

alan.cole@colliers.com



Colliers International

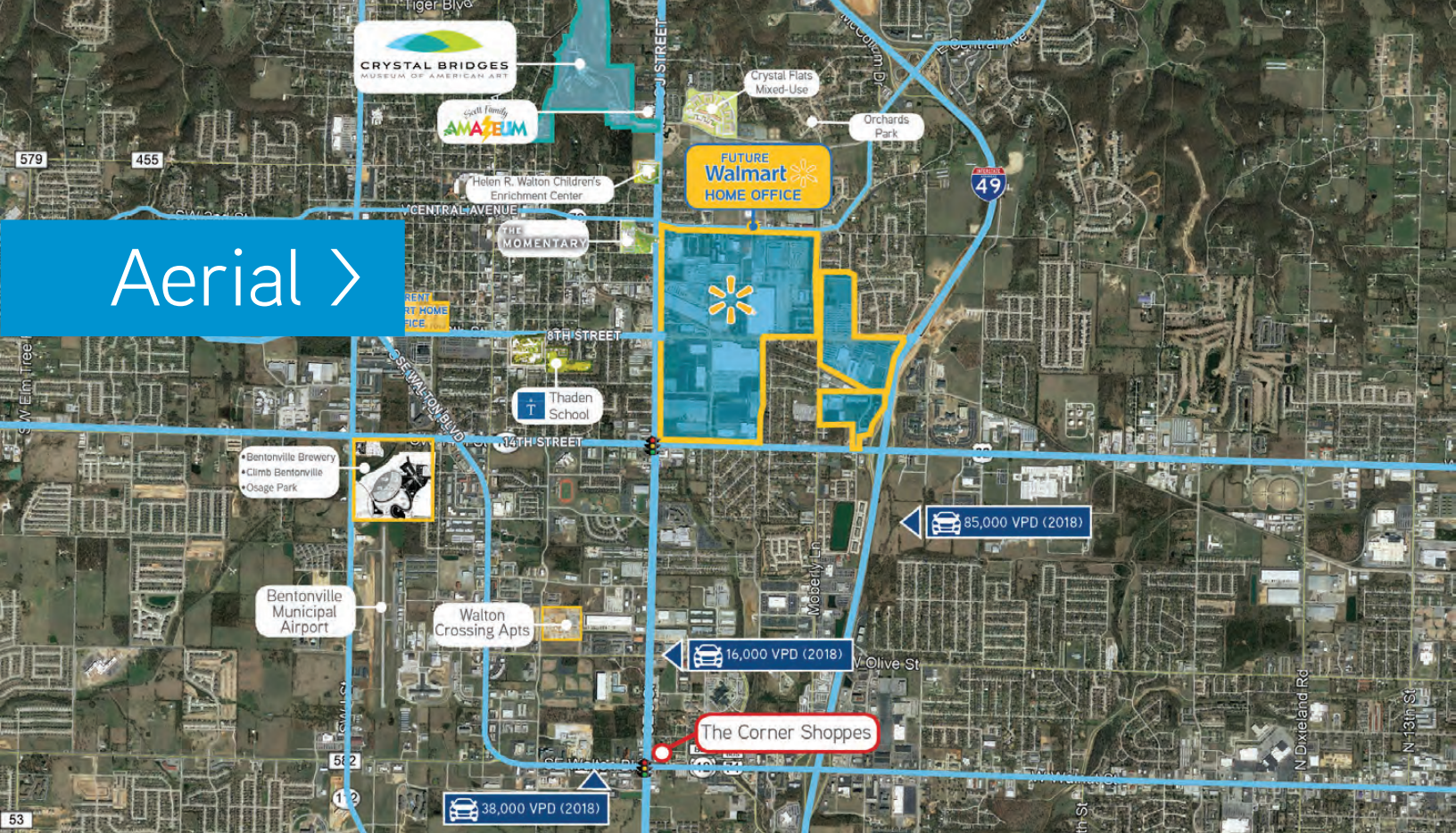
4204 S. Pinnacle Hills Pkwy | Suite 102

Rogers, AR 72758

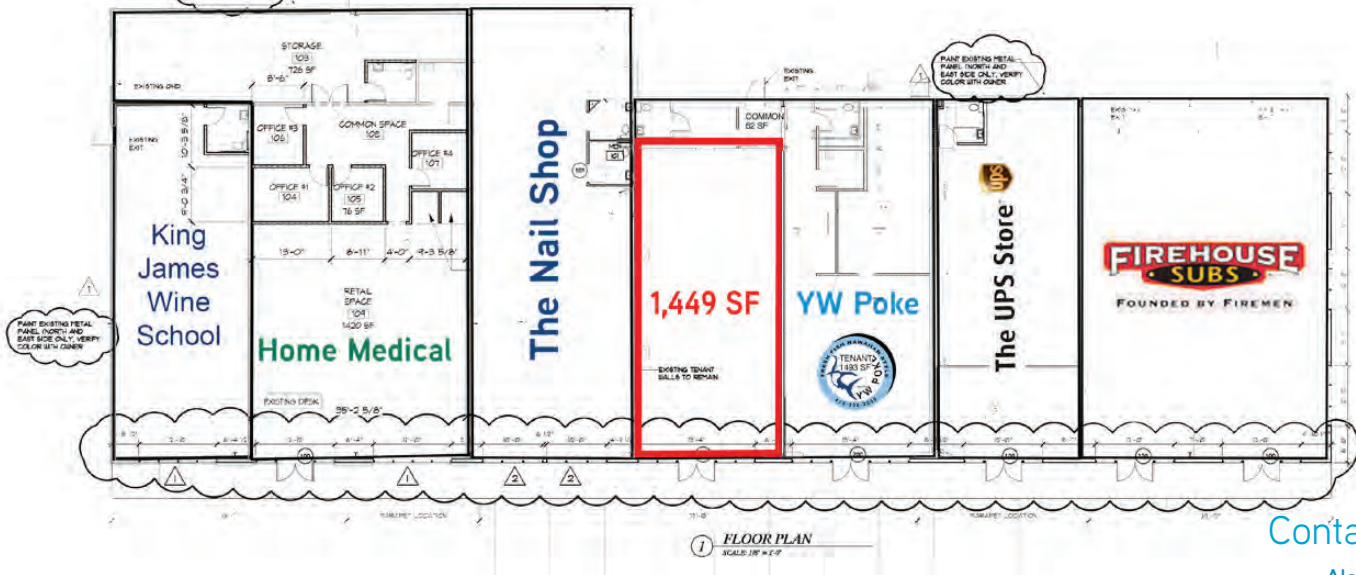
P: +1 479 636 9000

www.colliers.com

This document has been prepared by Colliers International for advertising and general information only. Colliers International makes no guarantees, representations or warranties of any kind, expressed or implied, regarding the information including, but not limited to, warranties of content, accuracy and reliability. Any interested party should undertake their own inquiries as to the accuracy of the information. Colliers International excludes unequivocally all inferred or implied terms, conditions and warranties arising out of this document and excludes all liability for loss and damages arising there from. This publication is the copyrighted property of Colliers International and/or its licensor(s). ©2019. All rights reserved.



Aerial >



Contact us:

Alan W. Cole

Principal | Arkansas

D: +1 479 845 1505

C: +1 479 644 5849

alan.cole@colliers.com

Colliers International

4204 S. Pinnacle Hills Pkwy | Suite 102

Rogers, AR 72758

P: +1 479 636 9000

www.colliers.com

Demographics

	1 Mile	3 Miles	5 Miles
Est. Population 2019	2,007	49,505	113,787
Proj. Population 2024	2,290	56,442	129,690
Est. Households 2019	1,049	19,025	41,830
Proj. Households 2024	1,206	21,713	47,693
Avg. Est. Household Income 2019	\$100,409	\$95,988	\$98,937

