

FOR LEASE > OFFICE SPACE

# Vibe Cottonwood Building

6440 SOUTH WASATCH BLVD | COTTONWOOD HEIGHTS, UT

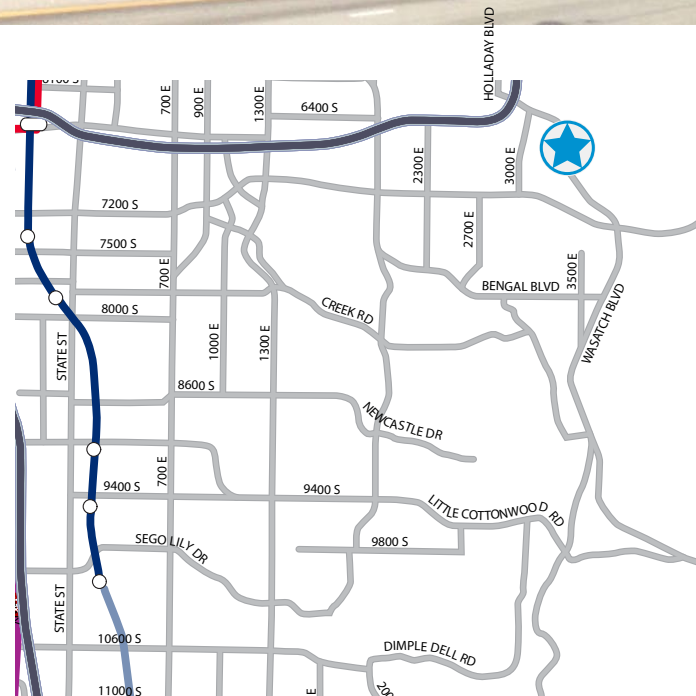


**Broker Incentive \$1.00 PSF**  
for any lease fully executed before October 31 2018



## Property Information

- > Lease rate: \$29.00/SF full service
- > 2nd floor space:
  - Suite 220 - 3,487 RSF
  - Suite 225 - 1,662 RSF
  - Suite 270 - 2,664 RSF, available 8/1/18
- > 3rd floor space:
  - 11,484 RSF
- > Unmatched panoramic views of the entire Salt Lake Valley
- > Ample parking: 4/1,000 with 22 covered parking stalls
- > Close proximity to restaurants and services (new Hyatt Place, Market Street, Trio, Happy Sumo, Zupas, Marriott, etc.)



FOR LEASE > OFFICE SPACE

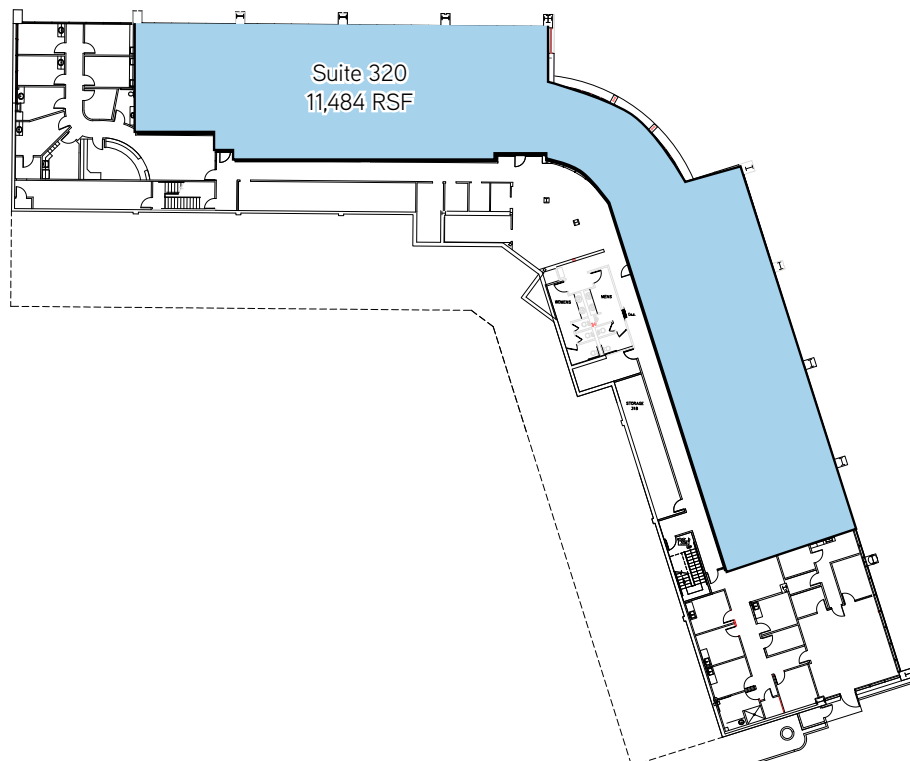
# Vibe Cottonwood Building

6440 SOUTH WASATCH BLVD | COTTONWOOD HEIGHTS, UT

Cowboy Partners Building  
2nd Floor



3rd Floor



**Brandon Fugal**  
+1 801 947 8300  
brandon.fugal@colliers.com

**Brent Haight**  
+1 801 947 8355  
brent.haight@colliers.com

*Colliers International*  
6550 S Millrock Dr | Suite 200  
Salt Lake City, UT 84121  
P: +1 801 947 8300





FOR LEASE > OFFICE SPACE

# Vibe Cottonwood Building

6440 SOUTH WASATCH BLVD | COTTONWOOD HEIGHTS, UT



This document has been prepared by Colliers International for advertising and general information only. Colliers International makes no guarantees, representations or warranties of any kind, expressed or implied, regarding the information including, but not limited to, warranties of content, accuracy and reliability. Any interested party should undertake their own inquiries as to the accuracy of the information. Colliers International excludes unequivocally all inferred or implied terms, conditions and warranties arising out of this document and excludes all liability for loss and damages arising there from. This publication is the copyrighted property of Colliers International and/or its licensor(s). ©2017. All rights reserved.

Colliers International  
6550 S Millrock Dr | Suite 200  
Salt Lake City, UT 84121  
P: +1 801 947 8300

