

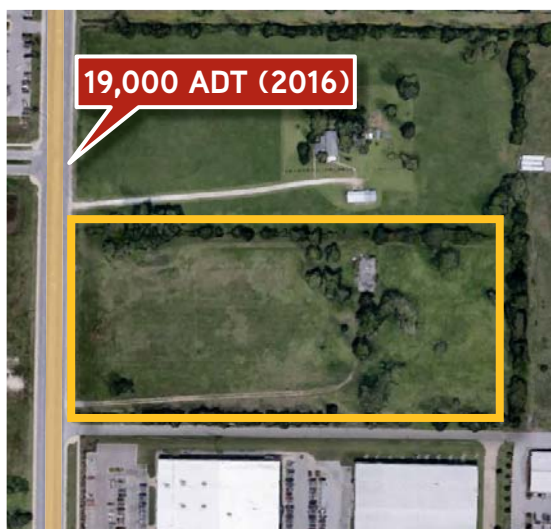
Land For Sale

7.75 Acres

SE J STREET

2303 SE J Street, Bentonville | AR

Bentonville land opportunity. Located on J Street between Walton Blvd. and Hwy 102. Good topography, zoned I-1 Light Industrial. Great location for office, warehouse, and other uses. New Walmart campus will be constructed 10 blocks to the north.



FEATURES



Zoned I-1 Light Industrial



SE J Street traffic count is 19,000 ADT (2016)



\$6.50 PSF

\$2,194,355

Contact us:

Ramsay Ball

Executive Broker | Arkansas

D: +1 479 845 1502

C: +1 479 640 6405

ramsay.ball@colliers.com

Wade Smith

Brokerage | Arkansas

D: +1 479 845 1518

C: +1 214 924 1605

wade.smith@colliers.com



Colliers International

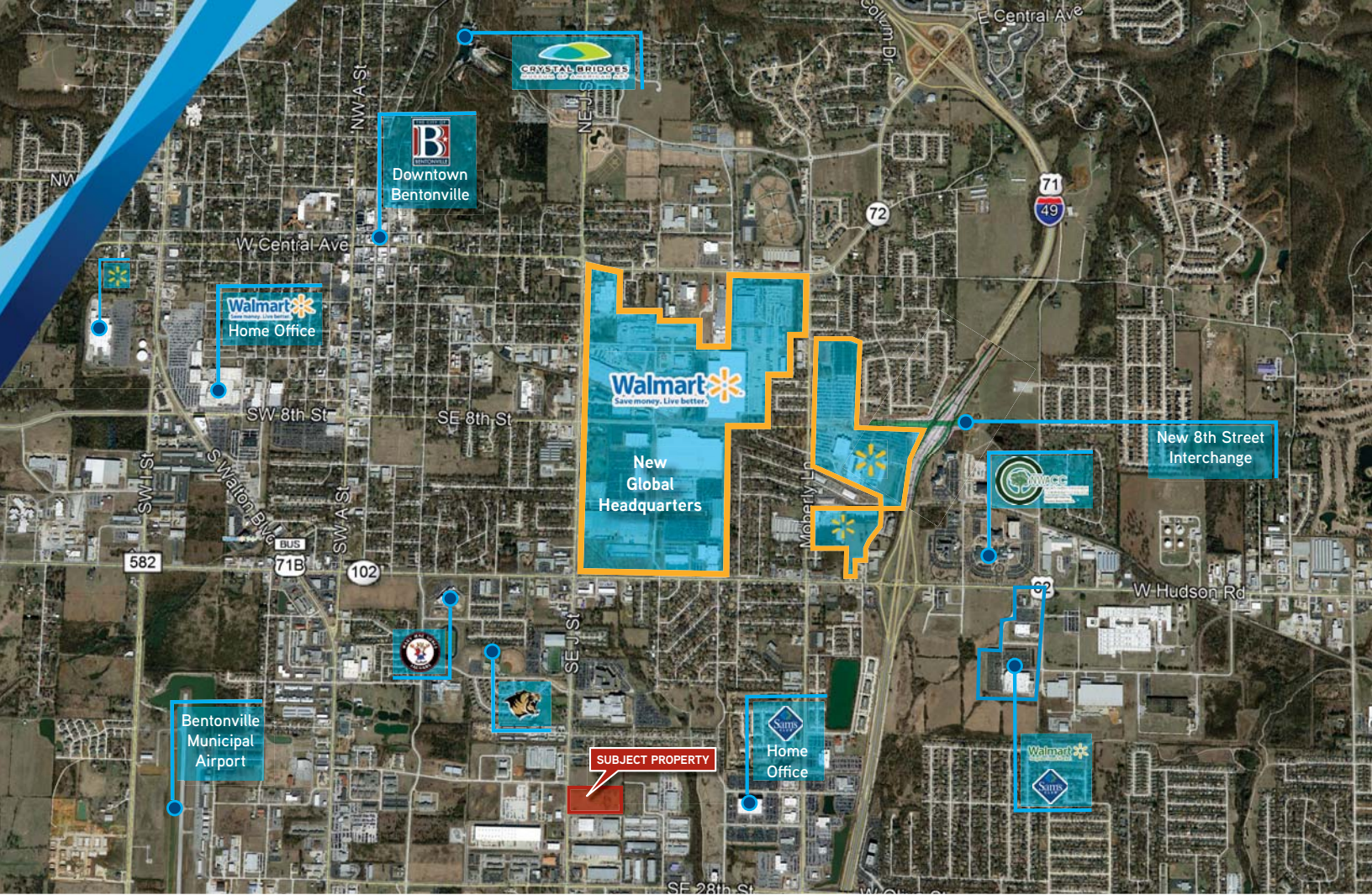
4204 S. Pinnacle Hills Pkwy | Suite 102

Rogers, AR 72758

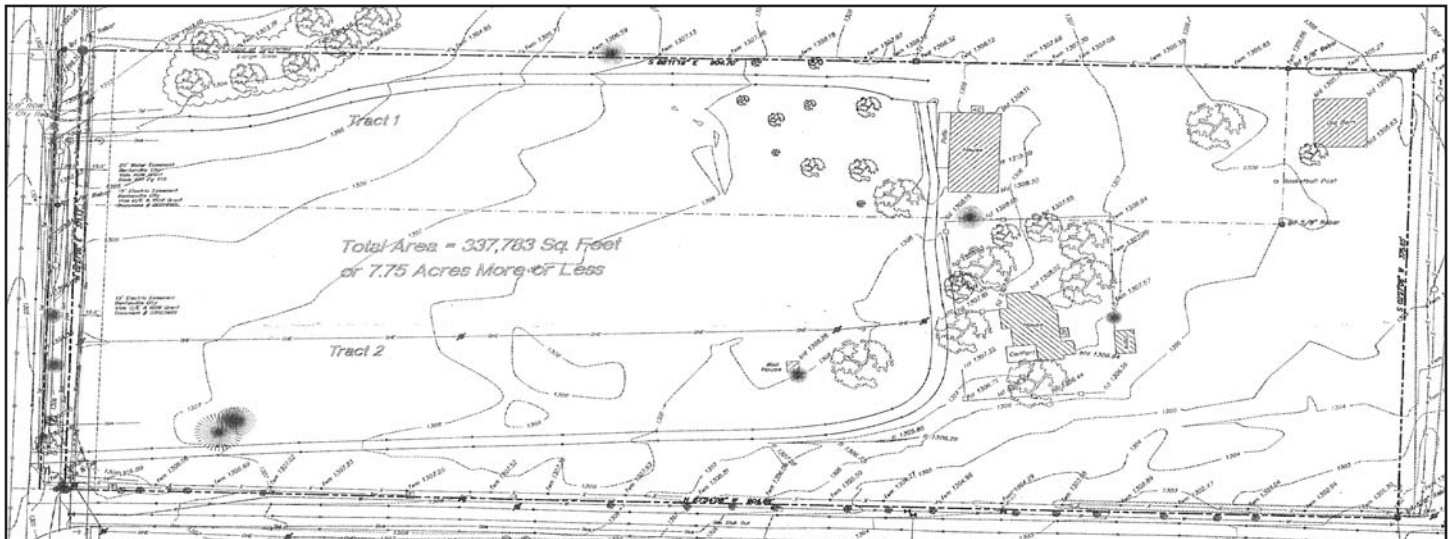
P: +1 479 845 6000

www.colliers.com/arkansas

This document has been prepared by Colliers International for advertising and general information only. Colliers International makes no guarantees, representations or warranties of any kind, expressed or implied, regarding the information including, but not limited to, warranties of content, accuracy and reliability. Any interested party should undertake their own inquiries as to the accuracy of the information. Colliers International excludes unequivocally all inferred or implied terms, conditions and warranties arising out of this document and excludes all liability for loss and damages arising there from. This publication is the copyrighted property of Colliers International and/or its licensor(s). ©2017. All rights reserved.



Survey:



Contact us:

Ramsay Ball

Executive Broker | Arkansas
D: +1 479 845 1502
C: +1 479 640 6405
ramsay.ball@colliers.com

Wade Smith

Brokerage | Arkansas
D: +1 479 845 1518
C: +1 214 924 1605
wade.smith@colliers.com

Colliers International

4204 S. Pinnacle Hills Pkwy | Suite 102
Rogers, AR 72758
P: +1 479 845 6000
www.colliers.com/arkansas

