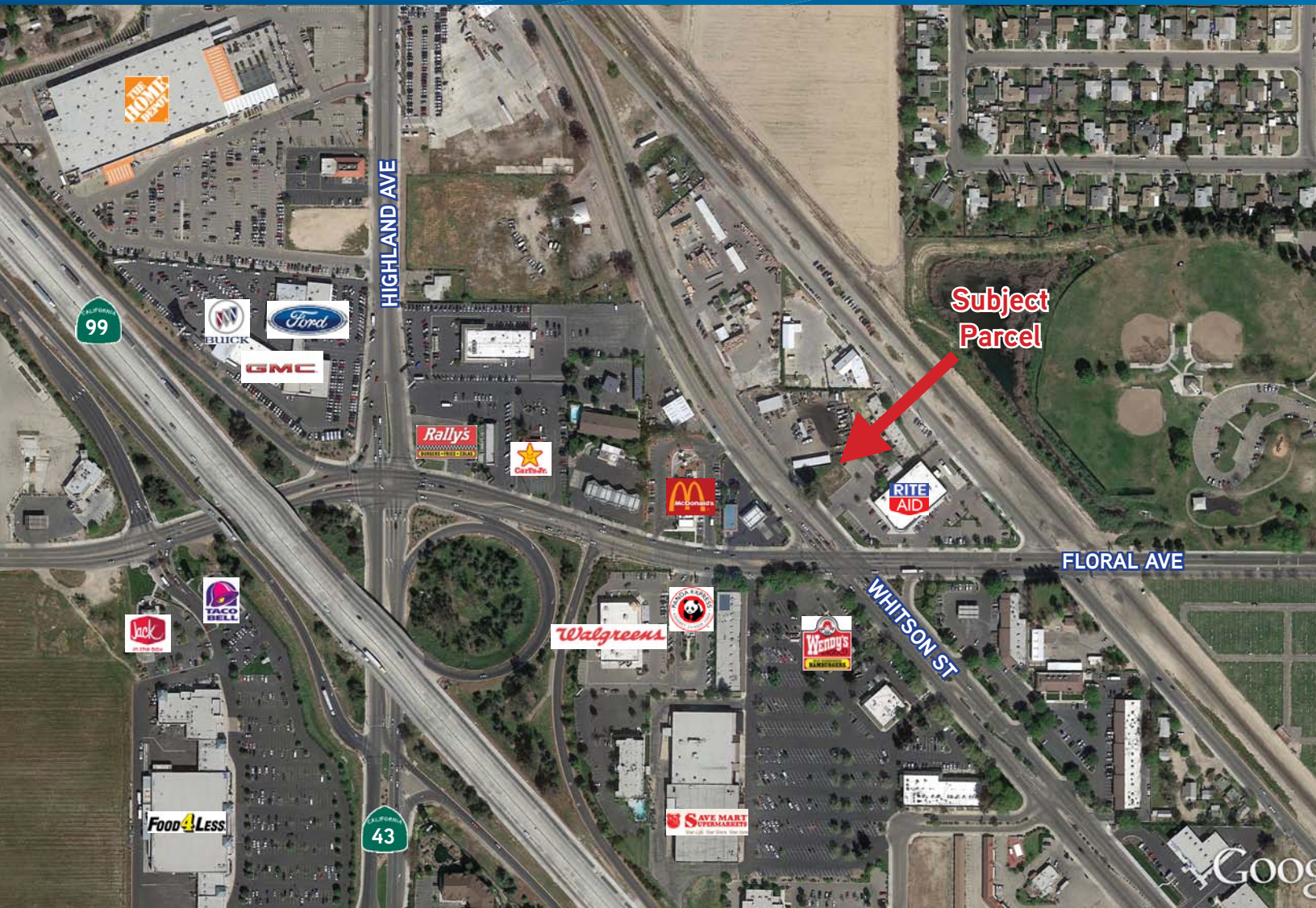


FOR LEASE > RITE AID SURPLUS LAND

# 2640 Floral Avenue

SELMA, CALIFORNIA



## Property Summary

- > Improved Parcel.
- > High Traffic Signalized Intersection.
- > Single User or Multi-Tenant Building.
- > Floral Avenue Traffic Count: 19,400 ADT (est.)

> Demographics:	1 Mile	3 Miles	5 Miles
Population:	14,747	27,686	42,791
Households:	4,071	7,708	11,820
Avg. HH Income:	\$53,272	\$56,147	\$56,227

AGENT: MARK HENRY  
559 221 1271 | EXT. 107  
FRESNO, CA  
mark.henry@colliers.com  
BRE #00869280

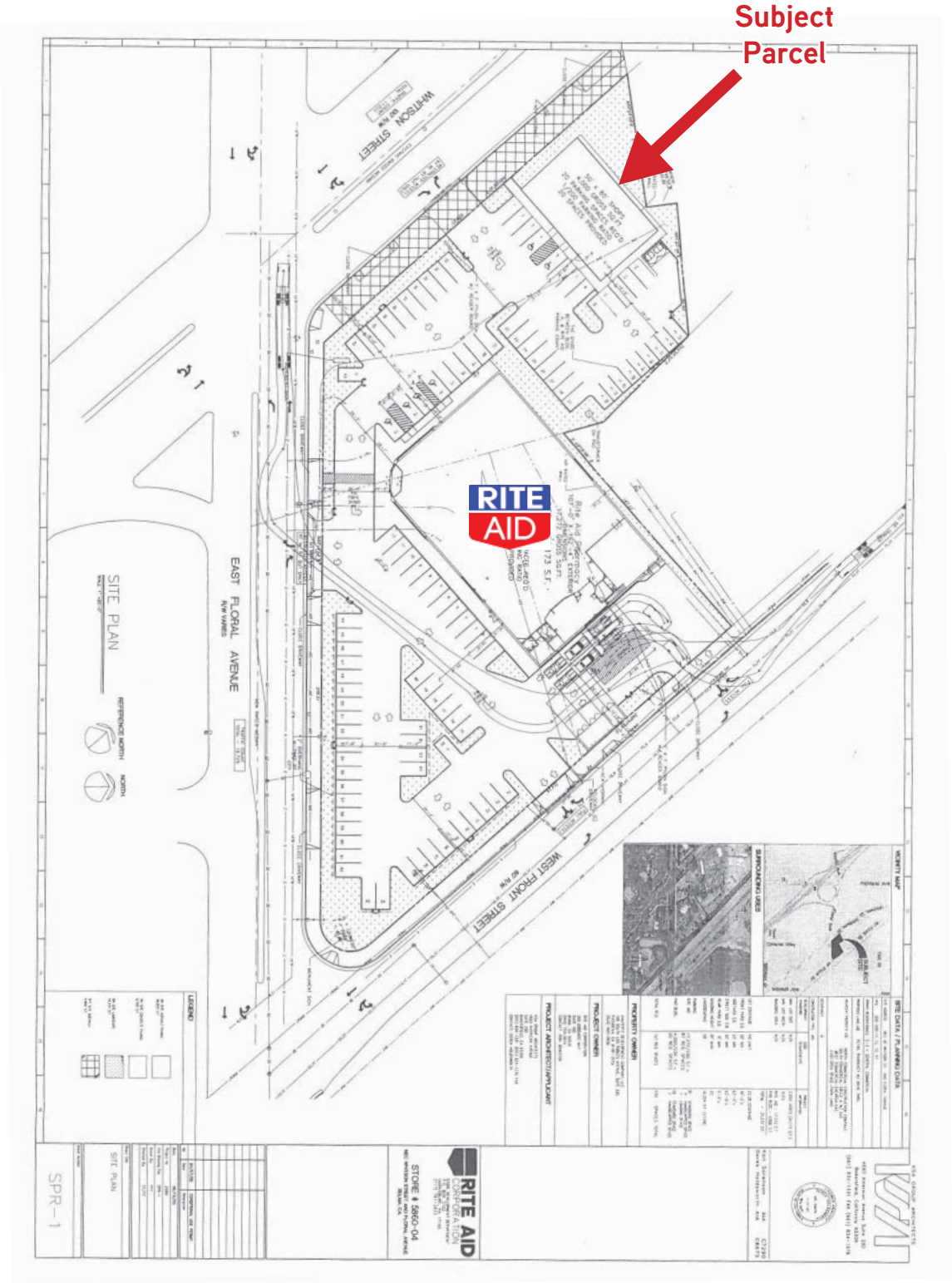
COLLIERS INTERNATIONAL  
7485 N. Palm Avenue #110  
Fresno, CA 93711  
www.colliers.com/fresno



# For Lease > Rite Aid Surplus Land

2640 FLORAL AVENUE, SELMA, CA

## Site Plan



This document has been prepared by Colliers International for advertising and general information only. Colliers International makes no guarantees, representations or warranties of any kind, expressed or implied, regarding the information including, but not limited to, warranties of content, accuracy and reliability. Any interested party should undertake their own inquiries as to the accuracy of the information. Colliers International excludes unequivocally all inferred or implied terms, conditions and warranties arising out of this document and excludes all liability for loss and damages arising there from. This publication is the copyrighted property of Colliers International and/or its licensor(s). ©2015. All rights reserved.

