

CREATIVE OFFICE SUBLEASE > 1,458 SF

1990 Westwood Blvd, Suite 305
Los Angeles, CA 90025

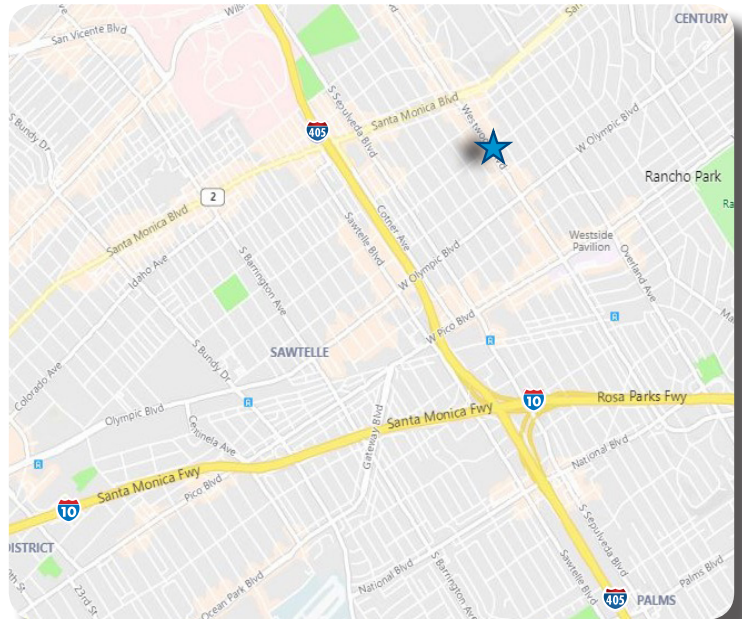


PROPERTY HIGHLIGHTS

- » Size: ±1,458 RSF
- » Sublease Term Ends: 5/31/2021
- » Available: Immediately
- » Asking Rate: \$3.45/SF/Month/FSG
- » Parking: 4 parking spaces

AMENITIES

- » Private Interior courtyard
- » Recently renovated lobby
- » Walking distance to shops and restaurants
- » Close proximity to 405 & 10 freeways
- » Blocks from Google's new campus



THACHER GOODWIN

License No. 01758949

Dir +1 310 321 1821

thacher.goodwin@colliers.com

CARTER RUDNICK

License No. 01978170

Dir +1 310 321 1835

carter.rudnick@colliers.com

COLLIERS INTERNATIONAL

2121 Rosecrans Ave., Suite 3301

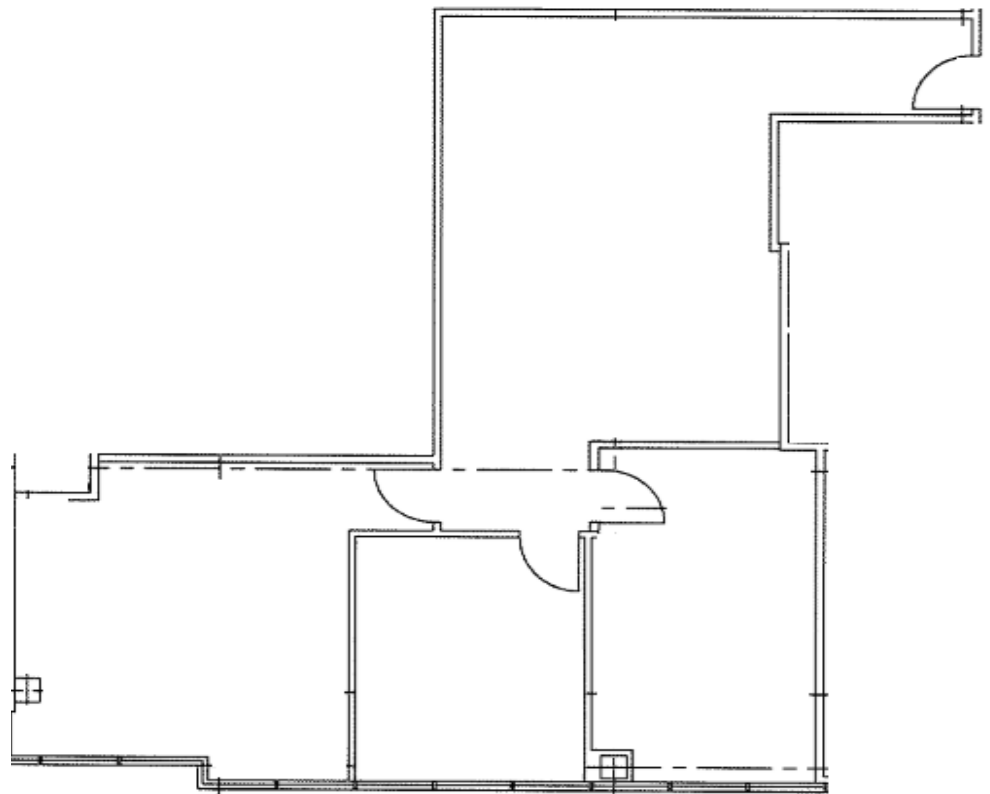
El Segundo, CA 90245

310 787 1000



SPACE FEATURES

- >> Polished concrete floors
- >> 3 Private Offices
- >> Natural Light
- >> Close proximity to Elevator and Restrooms



THACHER GOODWIN
License No. 01758949
Dir +1 310 321 1821
thacher.goodwin@colliers.com

CARTER RUDNICK
License No. 01978170
Dir +1 310 321 1835
carter.rudnick@colliers.com

COLLIERS INTERNATIONAL
2121 Rosecrans Ave., Suite 3301
El Segundo, CA 90245
310 787 1000