

FOR SALE > RETAIL OR OFFICE LAND



# ±0.93 Acre Publix Outparcel

8090 IRMO DRIVE, COLUMBIA, SC 29212



## Property Description

This property consists of ±0.93 acres within the Publix anchored shopping center at Murray Landing. It is located at the signalized intersection of Irmo Drive and North Lake Drive, these two roads provide easy access to both Lexington and Irmo/Dutch Fork markets as well as Lake Murray Boulevard and Interstate 26. Site is pad ready with water and sewer. The property would be ideal for retailers or small offices.

## Property Information

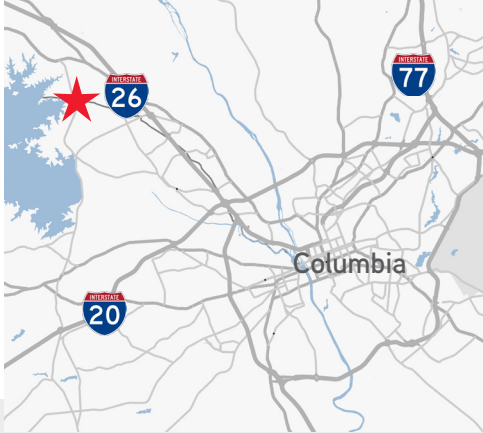
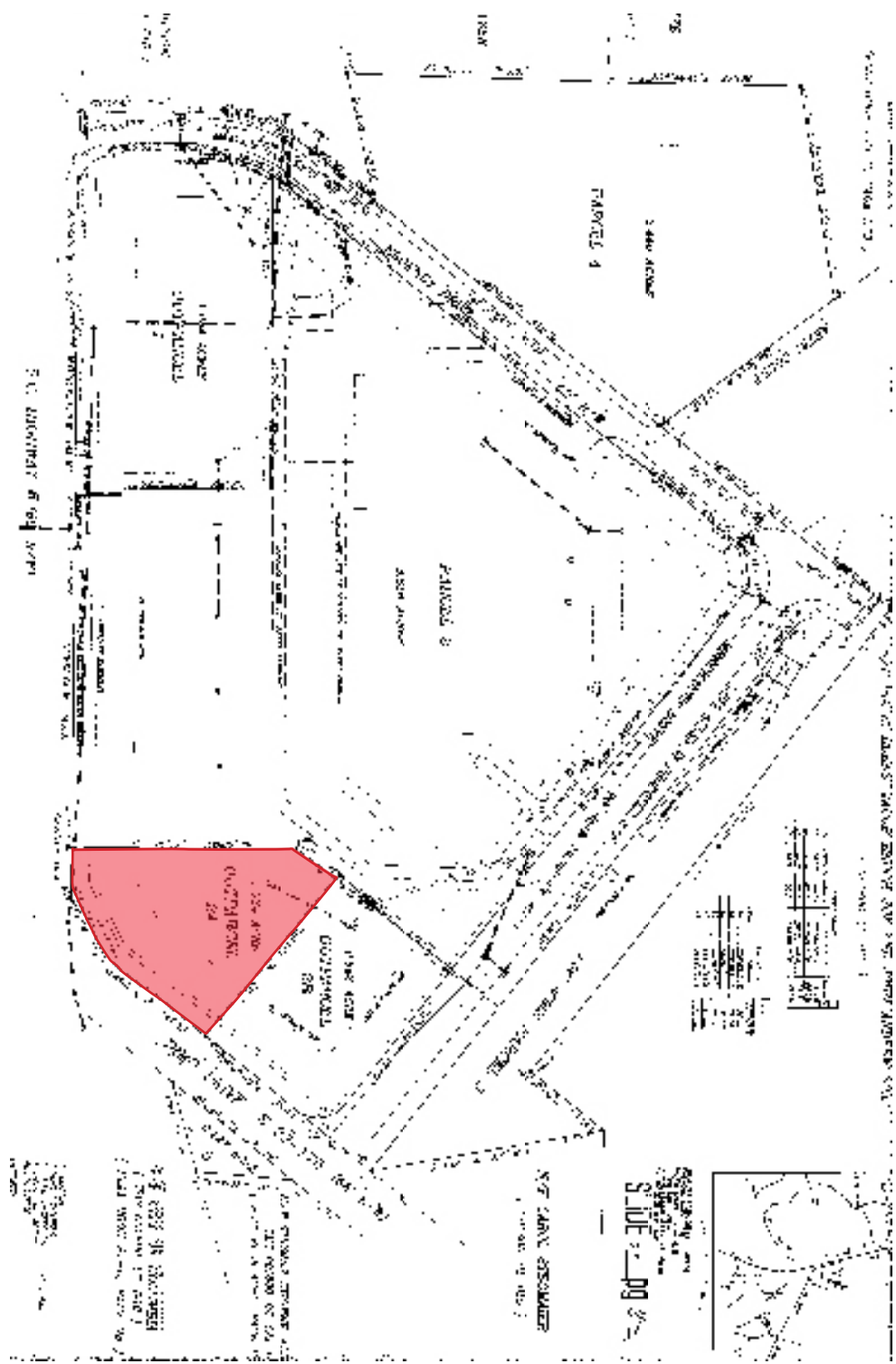
- > Site: ± 0.93 Acres
- > Interstate access: I-26: 3 miles
- > Zoning: General Commercial
- > Nearby Retailers: Publix, Bank of America, Anytime Fitness and H&R Block
- > Traffic counts:
  - North Lake Drive - 12,800 VPD
  - Irmo Drive - 8,500 VPD
- > Price: \$249,000.00

### Demographics - 2017 Estimate

	1 mile	3 miles	5 miles
Population:	6,058	29,934	72,028
Households:	2,242	11,570	27,733
Avg Household Income:	\$118,383	\$97,239	\$96,002

CRAIG WAITES  
803 401 4224 DIRECT  
craig.waites@colliers.com

COLLIERS INTERNATIONAL  
1301 Gervais Street, Suite 600  
Columbia, South Carolina 29201  
www.colliers.com



## Contact Us

CRAIG WAITES  
803 401 4224 DIRECT  
[craig.waites@colliers.com](mailto:craig.waites@colliers.com)

COLLIERS INTERNATIONAL  
1301 Gervais Street, Suite 600  
Columbia, South Carolina 29201  
[www.colliers.com](http://www.colliers.com)

