



# Office Condo For Sale

**Andy Lubinski, SIOR**

Vice Chair  
+1 952 221 8067  
andy.lubinski@colliers.com

**Justin Felix**

Senior Transaction Manager  
+1 612 718 2234  
justin.felix@colliers.com

**Aaron Whitmore**

Associate Vice President  
+1 612 963 1377  
aaron.whitmore@colliers.com

**Ethan Haglund**

Senior Associate  
+1 952 200 6199  
ethan.haglund@colliers.com

**Trevor Brandvold**

Associate  
+1 612 816 4875  
trevor.brandvold@colliers.com

1600 Utica Avenue S, Suite 300  
Minneapolis, MN 55416  
P: +1 952 897 7700  
colliers.com/msp

## 8682 Eagle Creek Circle Savage, MN 55378

2,580 SF Available For Sale

- Located in a retail & office business park in Savage, MN
- Approximately 20 miles South of downtown Minneapolis
- Equipped with an elevator
- Modern interior with abundant natural light
- Located off of Hwy 13 with easy access to Hwy 169

Copyright © 2025 Colliers International. Information herein has been obtained from sources deemed reliable, however its accuracy cannot be guaranteed. The user is required to conduct their own due diligence and verification.

# For Sale

## Property Highlights

Address: 8682 Eagle Creek Circle, Savage, MN 55378

PID: 264140480

Building SF: 2,580 SF - Total  
1,430 SF - Main Level  
1,150 SF - Upper Level

Lot Size: .03 acres

Zoning: PID - Planned Industrial District

Year Built: 2007

Offices: 2 on Main Level + Conference Room  
3 on Upper Level

Restrooms: 1 on Main Level  
1 on Upper Level

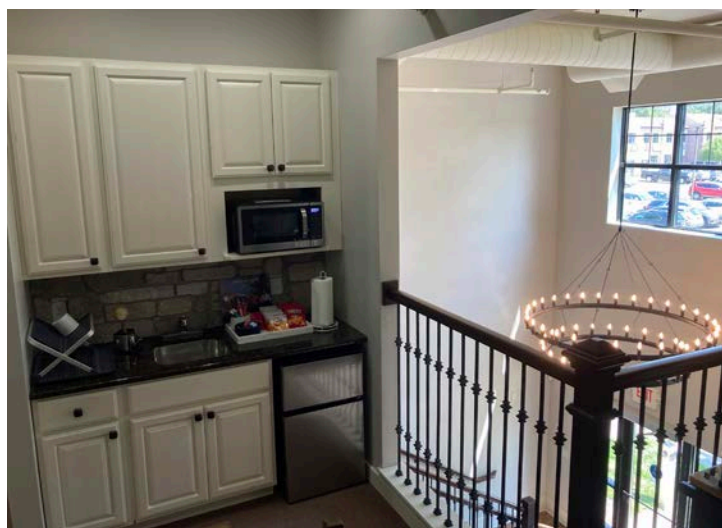
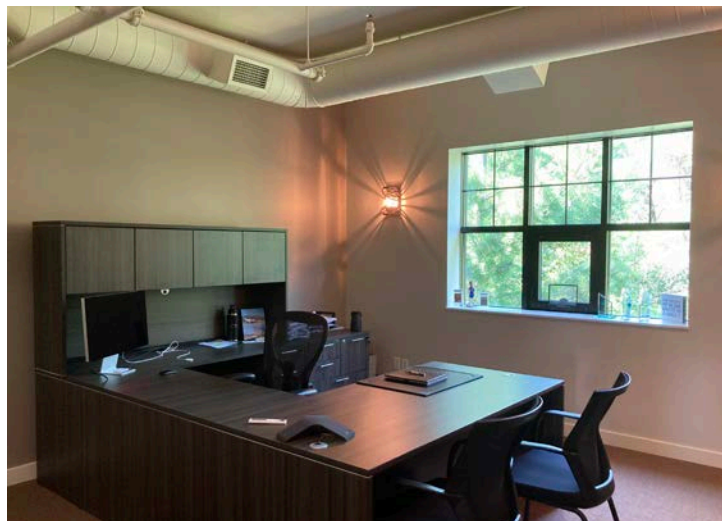
Construction: Masonry

Parking: Ample

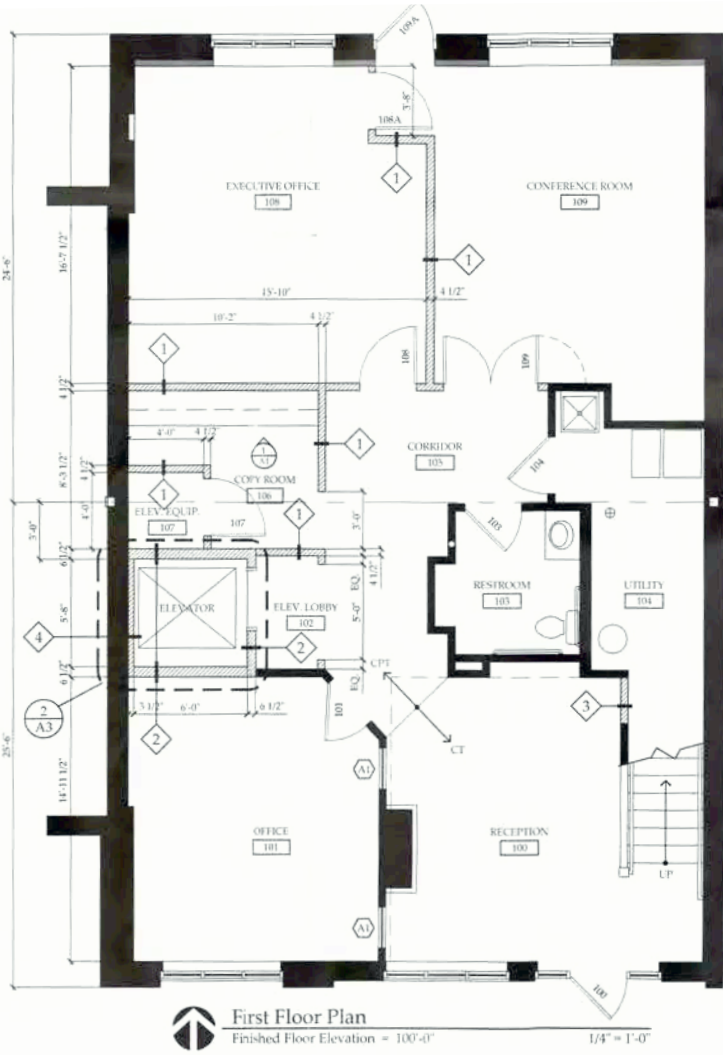
2025 Taxes: \$11,820

Sale Price: \$515,000 (\$199.61/SF)

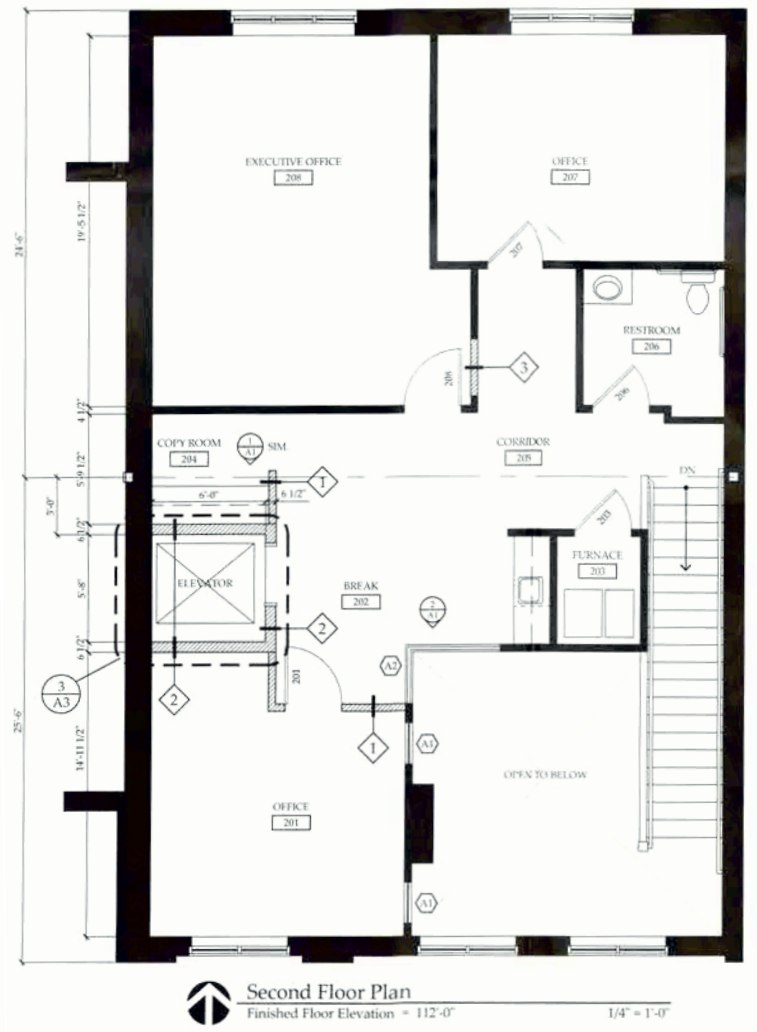
\*Listing broker has a majority interest in the property



# Floor Plans



First Floor



Second Floor



# Location Overview

## Scott County



Population

160,005-Cnty (2025)  
33,778-Savage (2025)



Workforce

67% of population  
between ages 19-75



Median  
Household  
Income

\$109,000 (2025)



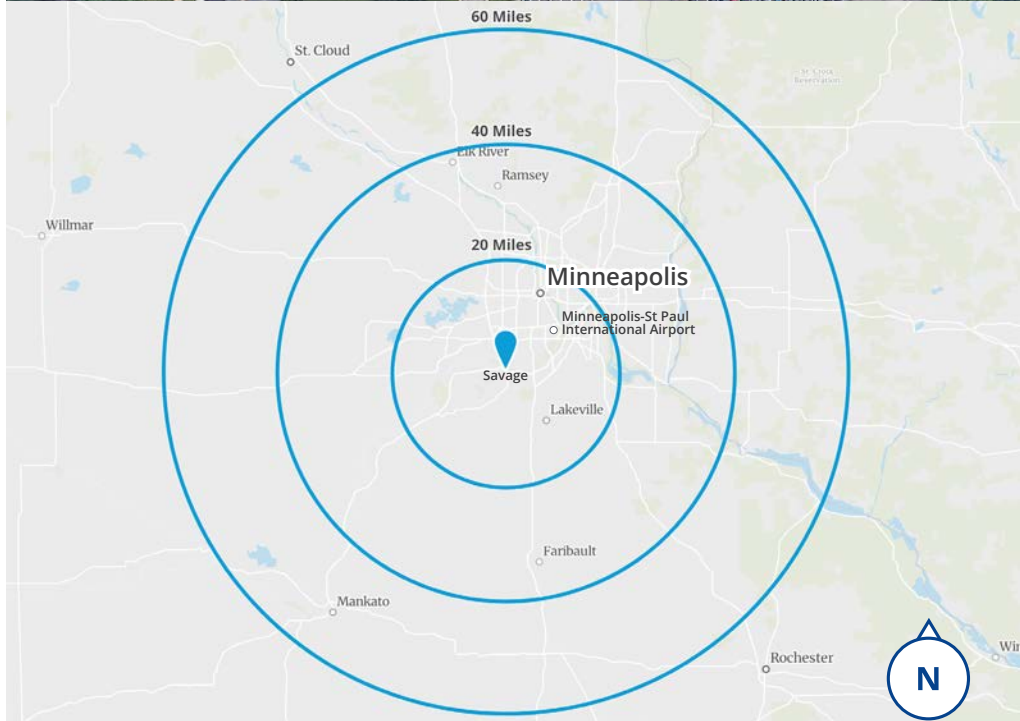
Businesses

4,023 (2025)

## Web Links

<https://www.savagemn.gov/>

<https://www.scottcountymn.gov/>



1600 Utica Avenue S, Suite 300  
Minneapolis, MN 55416  
P: +1 952 897 7700

This document has been prepared by Colliers International for advertising and general information only. Colliers International makes no guarantees, representations or warranties of any kind, expressed or implied, regarding the information including, but not limited to, warranties of content, accuracy and reliability. Any interested party should undertake their own inquiries as to the accuracy of the information. Colliers International excludes unequivocally all inferred or implied terms, conditions and warranties arising out of this document and excludes all liability for loss and damages arising there from. This publication is the copyrighted property of Colliers International and/or its licensor(s). ©2025. All rights reserved.