



Accelerating success.



Pines Plaza For Lease

Debbie Parmley (B), CCIM

Vice President
Hawaii Island Leasing Services &
Investment
Lic# RB-21953
808 987 7722
debbie.parmley@colliers.com

Joshua M. Parmley (S)

Senior Associate
Hawaii Island Leasing Services
Lic# RS-82162
808 987 0547
joshua.parmley@colliers.com

220 S. King Street, Suite 1800
Honolulu, Hawaii 96813
808 524 2666
colliers.com

75-240 Nani Kailua Drive, Kailua-Kona, HI 96740

Office Spaces for Lease

This professional office property is located just off Queen Ka'ahumanu Highway close to town, but away from the congestion of Kona Central. The property is clean and well maintained with upstairs and downstairs office spaces. There are dramatic ocean views with ample parking for both employees and clients.

Copyright © 2026 Colliers International. Information herein has been obtained from sources deemed reliable, however its accuracy cannot be guaranteed. The user is required to conduct their own due diligence and verification.

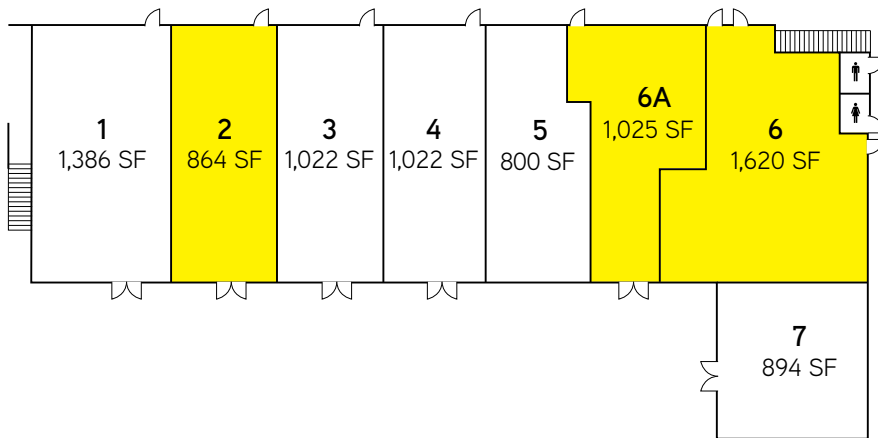
For Lease

Property Details

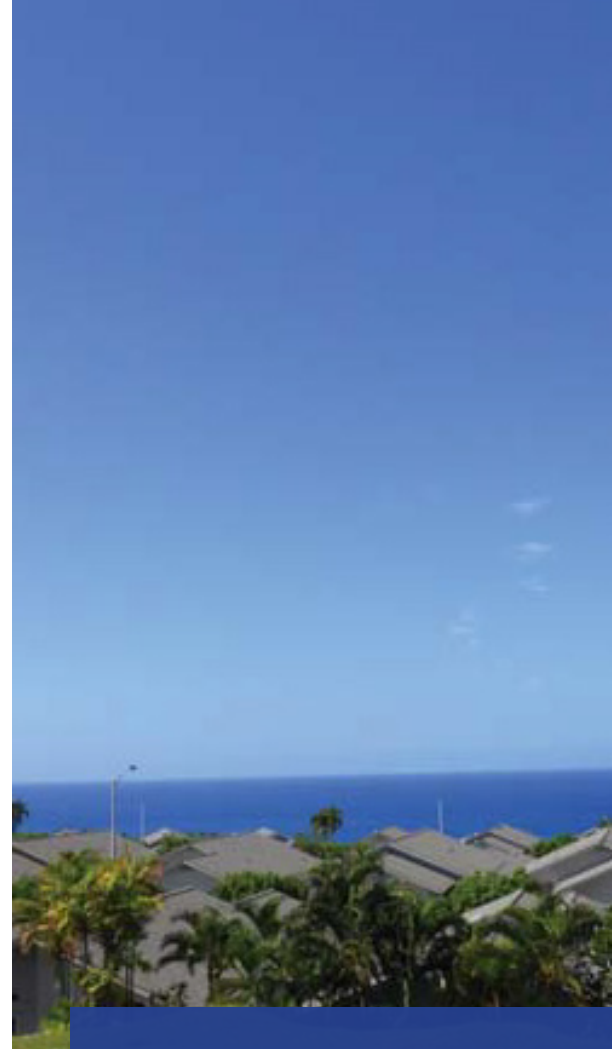
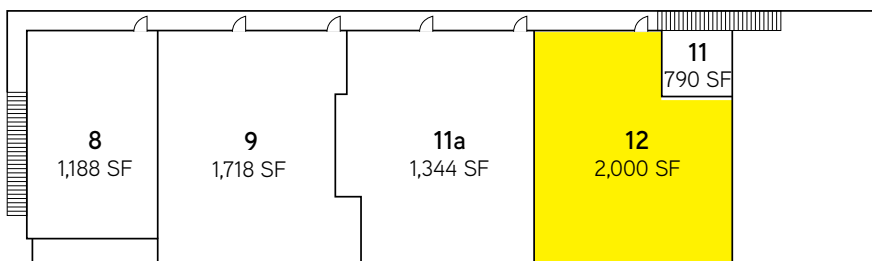
Area:	Kona
TMK Number:	(3) 7-5-10-57-92
Zoning:	RM-4
Available Spaces:	Suite 2 (864 SF) Suite 6 (1,620 SF) Suite 6A (1,025 SF) Suite 12 (2,000 SF)
Base Rent:	Negotiable
Operating Expenses:	\$1.02 PSF/Mo (Estimated)
Term:	Negotiable
Parking:	On site spaces available

Site Plan

First Floor



Second Floor



Contact us:

Debbie Parmley (B), CCIM

Vice President
Hawaii Island Leasing Services & Investment
Lic# RB-21953
808 987 7722
debbie.parmley@colliers.com

Joshua M. Parmley (S)

Senior Associate
Hawaii Island Leasing Services
Lic# RS-82162
808 987 0547
joshua.parmley@colliers.com



220 S. King Street, Suite 1800
Honolulu, Hawaii 96813
808 524 2666
colliers.com