

FOR LEASE > OFFICE SPACE



# 4927-4949 E. McKinley Avenue

FRESNO, CALIFORNIA



## Contact

AGENT: SCOTT BUCHANAN  
559 221 1271 | EXT. 101  
FRESNO, CA  
[scott.buchanan@colliers.com](mailto:scott.buchanan@colliers.com)  
DRE #01389446

## For Lease > Office Space

Located on the corner of McKinley and Fine Avenues close proximity to Fresno Yosemite Airport. The building is a freestanding masonry building, floor to ceiling exterior glass. Located in close proximity to popular restaurants, shopping centers, and financial institutions and offers easy access to both Freeways 168 and 180.

## Property Summary

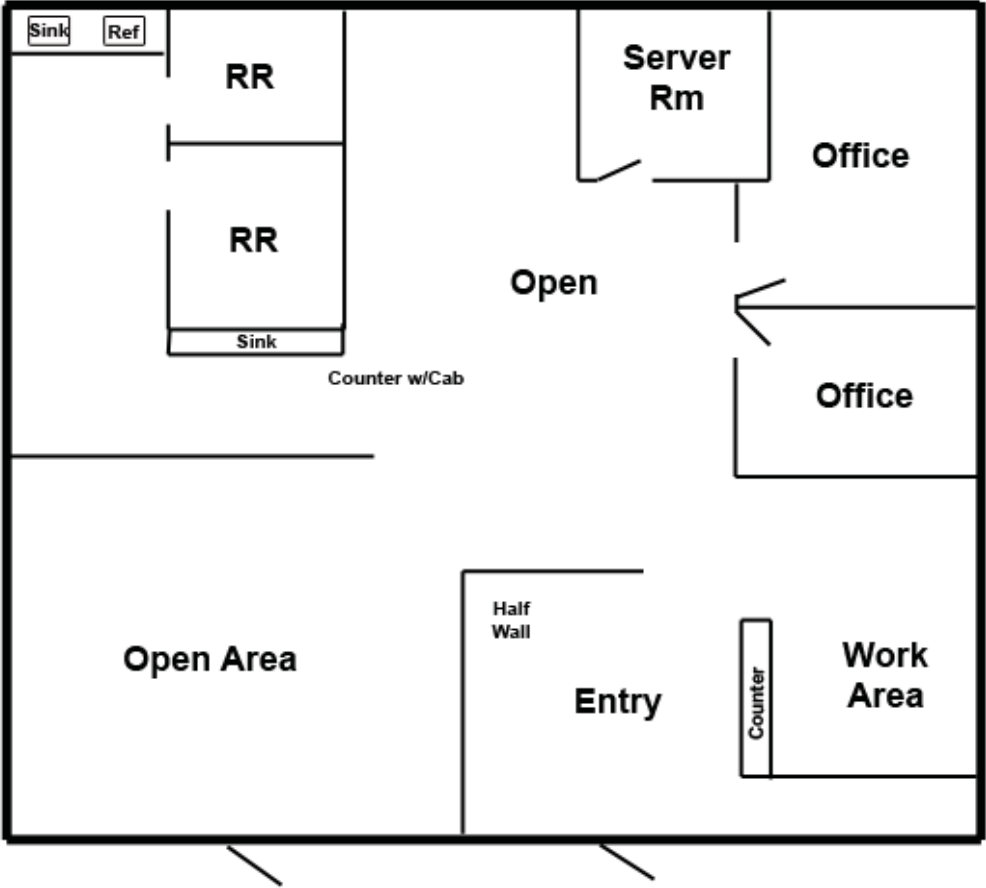
- > Affordable Lease Rate for Quality Airport Office Space
- > Easy Access to/from both Freeways 168 and 180
- > Located in Close Proximity to Several Amenities and Retail Services
- > Excellent Parking: Approximately 4 stalls per 1,000 square feet of leasable space
- > Lease Rate: \$0.90 PSF, plus utilities and janitorial
- > Interior Restrooms.

All information, representation and projections shown herein are based on information supplied by sources deemed to be reliable; however, they are not warranted by Colliers International and are subject to change without notice.

**COLLIERS INTERNATIONAL**  
7485 N. Palm Avenue, #110  
Fresno, CA 93711  
[www.colliers.com/fresno](http://www.colliers.com/fresno)

4947-4949 E. McKinley Avenue > Floor Plans

SUITE	RSF	RATE/RSF/YR	COMMENTS
4949	1,570	\$0.90 PSF, plus utilities and janitorial	Three private offices and reception area/open area.

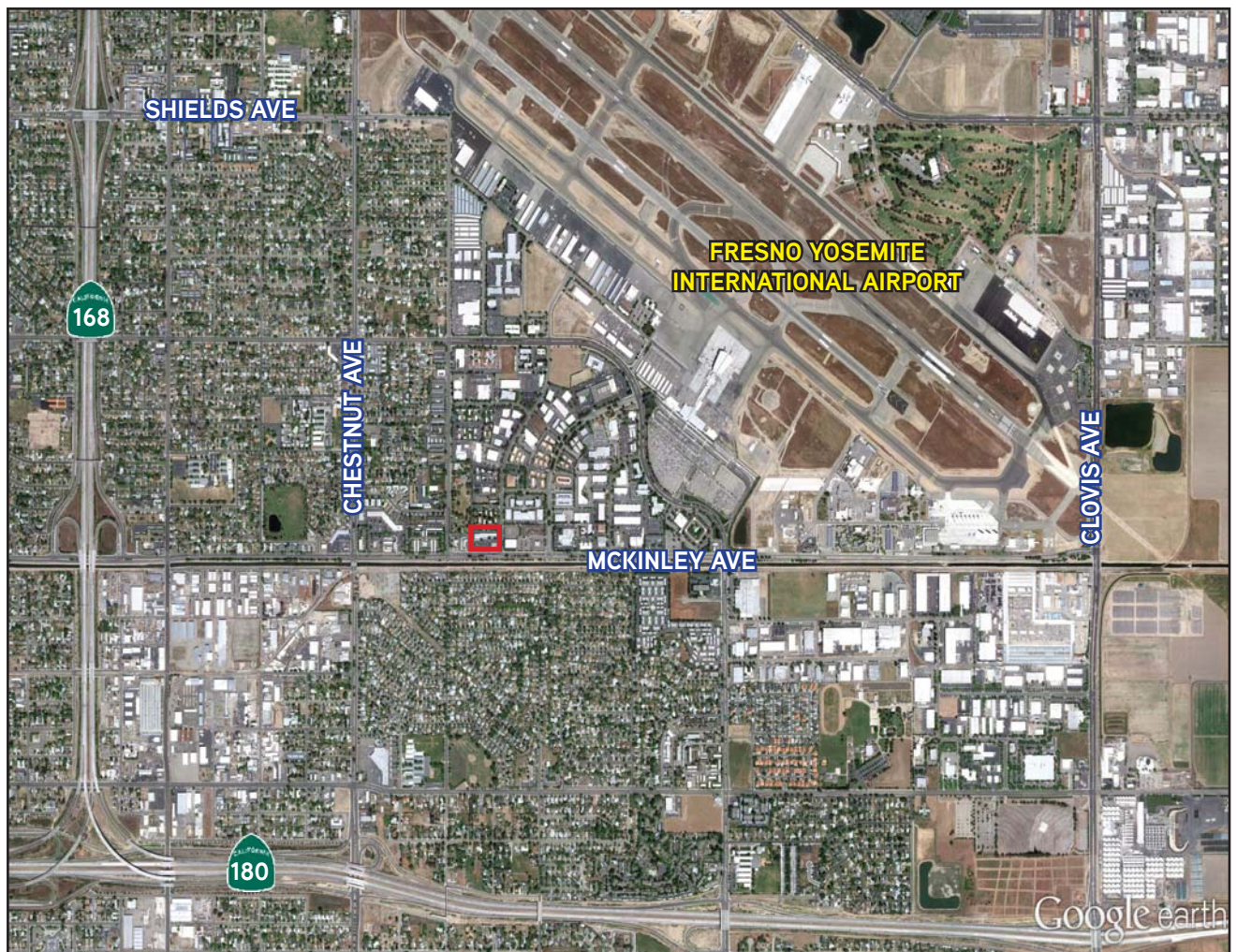
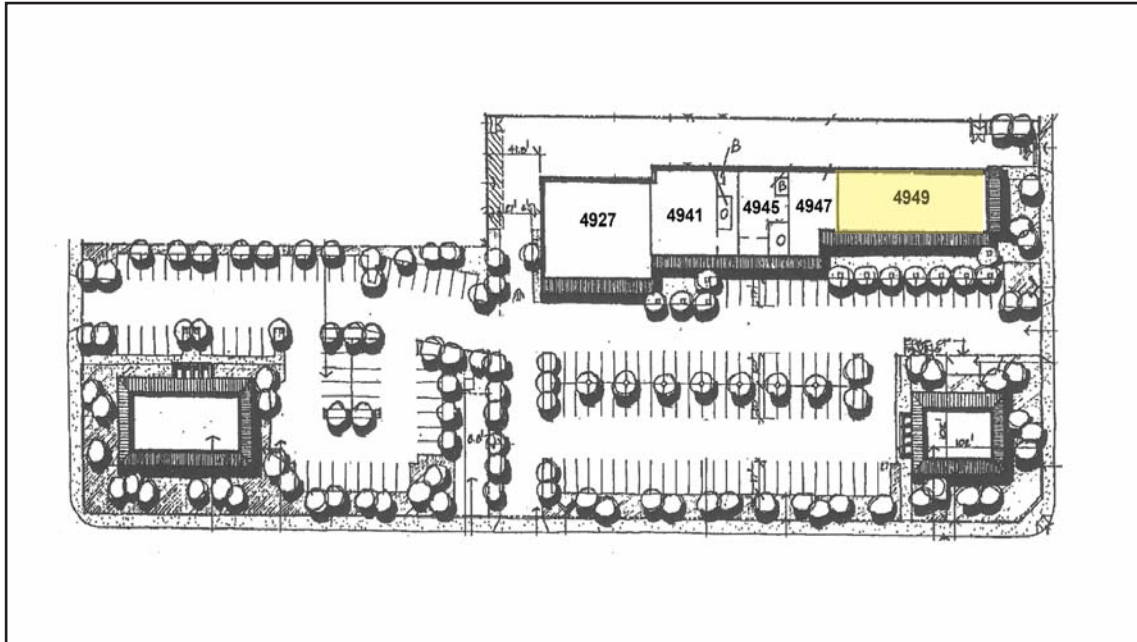


*\*Floor Plan Not To Scale*



# 4947 - 4949 E. McKinley Avenue > Site Plan / Aerial

FRESNO, CALIFORNIA



AGENT: SCOTT BUCHANAN  
559 221 1271 | EXT. 101  
FRESNO, CA  
scott.buchanan@colliers.com  
DRE #01389446

