

FOR LEASE

2475 TOUHY AVE - SUITE 100, ELK GROVE VILLAGE, IL

Colliers



Contact Us:

THOMAS RODENO

Vice Chair

847 698 8231

tom.rodeno@colliers.com

MATTHEW STAUBER, SIOR

Vice Chair

847 698 8236

matthew.stauber@colliers.com

PATRICK TURNER

Executive Vice President

847 698 8277

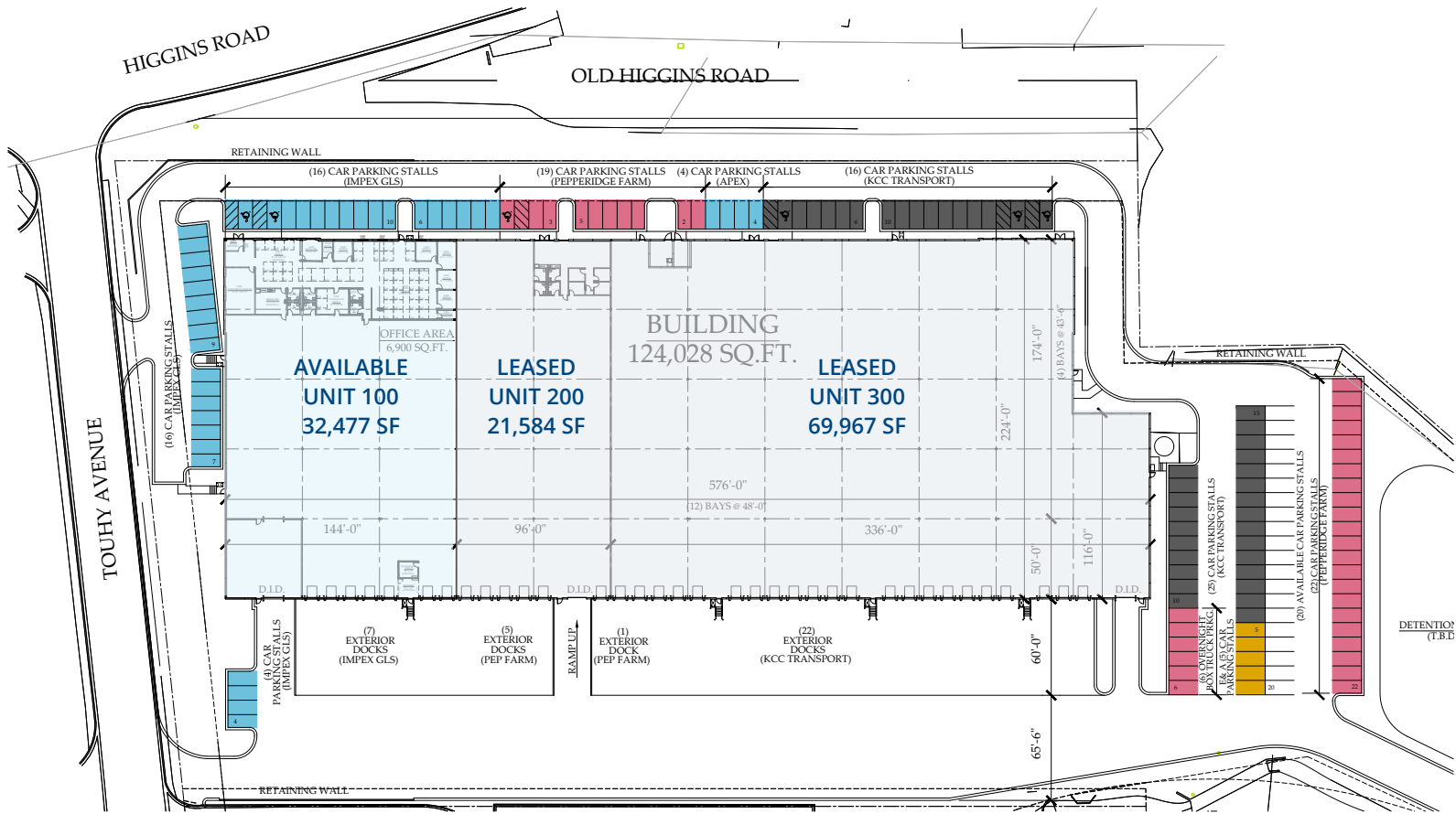
patrick.turner@colliers.com

Colliers International
6250 N. River Rd. | Suite 11-100
Rosemont, IL 60018
www.colliers.com/chicago

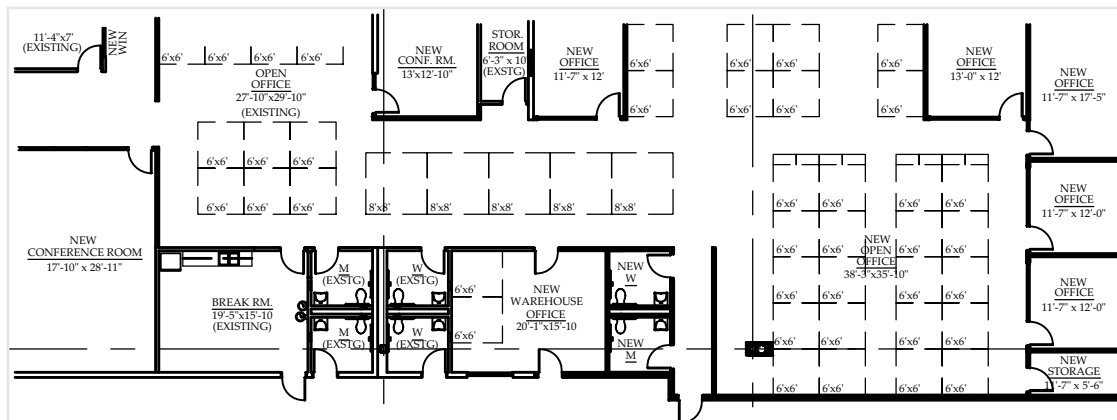
PROPERTY FEATURES

- Building Size: 124,028 SF
- Available Size: 32,477 SF
- Site Size: 7.26 acres
- Office Size: 6,900 SF
- Ceiling Height: 32' clear
- Loading: 7 exterior docks, 1 drive-in door
- Car Parking: 36 spaces
- Year Built: 2013
- Lease Rate: Subject to Offer
- Zoning: I-2 Industrial
- Modern Class A building
- Immediate access to 4-way interchange at Elmhurst Rd. & I-90
- Close proximity to I-294, major expressways and O'Hare International Airport
- Institutional ownership
- Available 8/1/26

SITE PLAN



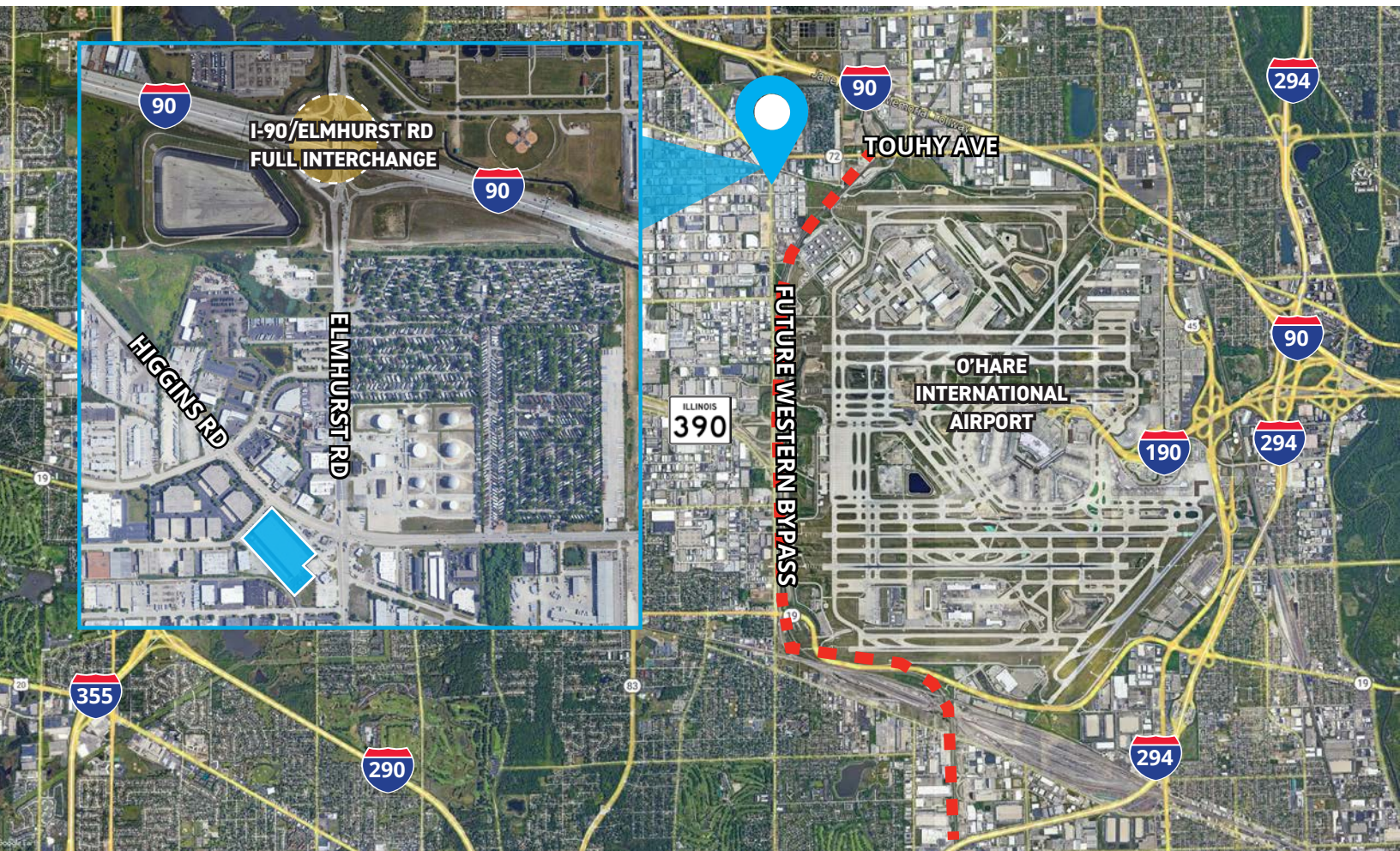
OFFICE PLAN



THOMAS RODENO
Vice Chair
+ 1 847 698 8231
tom.rodano@colliers.com

MATTHEW STAUBER, SIOR
Vice Chair
+ 1 847 698 823
matthew.stauber@colliers.com

PATRICK TURNER
Executive Vice President
+ 1 847 698 8277
patrick.turner@colliers.com



DISTANCE FROM SITE

I-290/YORK RD.	1 mile
ROUTE 83 4-WAY INTERCHANGE	2.5 miles
I-290/I-294 INTERCHANGE	3 miles

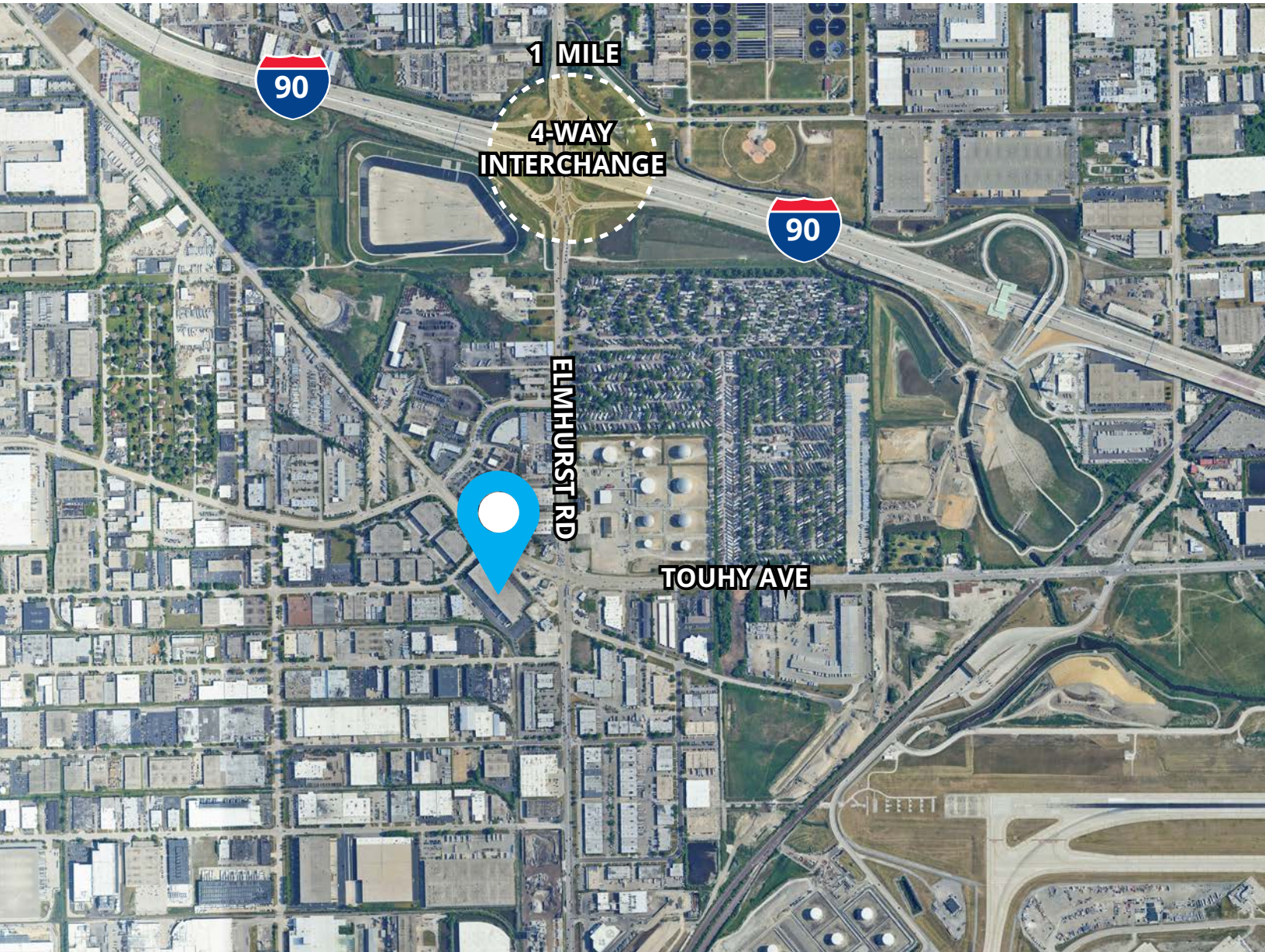
I-88	5 miles
I-290/I-355 4-WAY INTERCHANGE	6 miles
O'HARE AIRPORT	8 miles



THOMAS RODENO
 Vice Chair
 + 1 847 698 8231
 tom.rodeno@colliers.com

MATTHEW STAUBER, SIOR
 Vice Chair
 + 1 847 698 823
 matthew.stauber@colliers.com

PATRICK TURNER
 Executive Vice President
 + 1 847 698 8277
 patrick.turner@colliers.com



THOMAS RODENO
Vice Chair
+ 1 847 698 8231
tom.rodeno@colliers.com

MATTHEW STAUBER, SIOR
Vice Chair
+ 1 847 698 823
matthew.stauber@colliers.com

PATRICK TURNER
Executive Vice President
+ 1 847 698 8277
patrick.turner@colliers.com

AVAILABLE FOR LEASE | 2475 TOUHY AVE - SUITE 100, ELK GROVE VILLAGE, IL



THOMAS RODENO
Vice Chair
+ 1 847 698 8231
tom.rodeno@colliers.com

MATTHEW STAUBER, SIOR
Vice Chair
+ 1 847 698 823
matthew.stauber@colliers.com

PATRICK TURNER
Executive Vice President
+ 1 847 698 8277
patrick.turner@colliers.com