

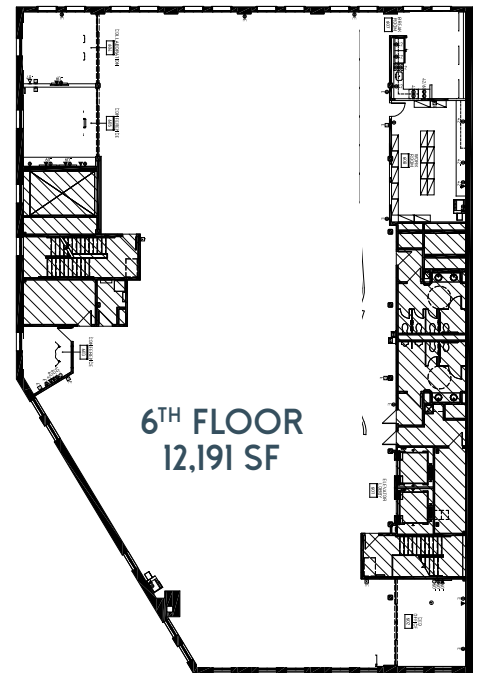
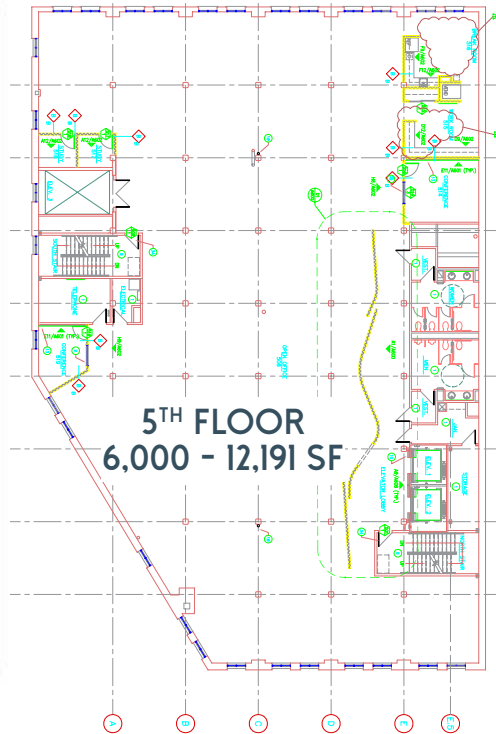
TWENTY-ONE FOURTEEN CENTRAL



Colliers
INTERNATIONAL

AVAILABLE SPACE

4th Floor	6,000 - 12,191 SF	\$22.00 PSF, full service
5th Floor	6,000 - 12,191 SF	\$22.00 PSF, full service
6th Floor	12,191 SF	\$24.00 PSF, full service

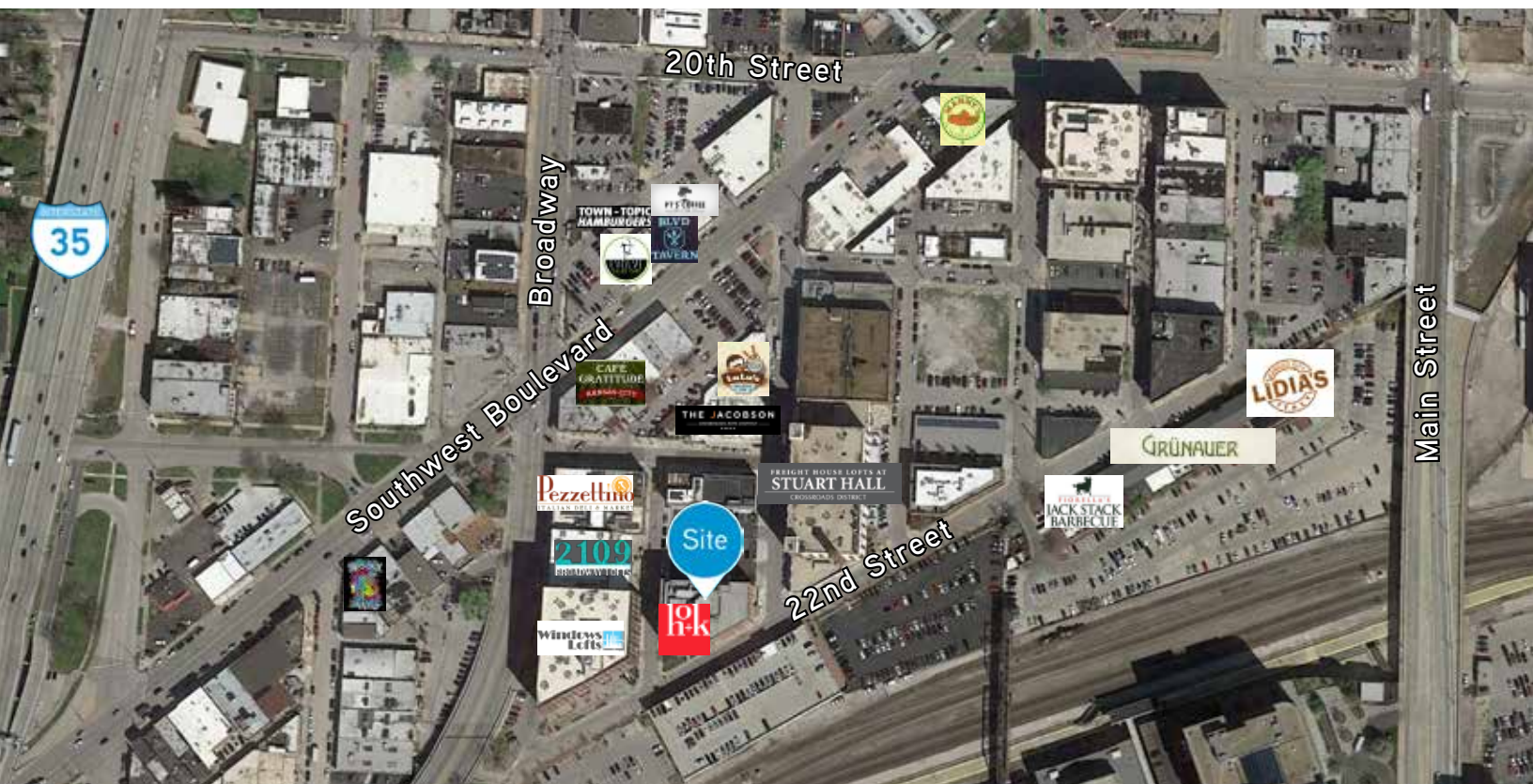


EVAN WARWICK
+1 816 556 1137
KANSAS CITY, MO
evan.warwick@colliers.com

PATRICK COPPINGER
+1 816 556 1110
KANSAS CITY, MO
pat.coppinger@colliers.com

PROPERTY FEATURES

- › 82,332 SF building
- › New lobby just completed
- › Covered parking in adjacent garage - 3.5/1,000 parking ratio
- › Exterior signage for full floor tenant
- › Anchor tenant is HOK





2114 CENTRAL STREET KANSAS CITY, MISSOURI

EVAN WARWICK
+1 816 556 1137
KANSAS CITY, MO
evan.warwick@colliers.com

PATRICK COPPINGER
+1 816 556 1110
KANSAS CITY, MO
pat.coppinger@colliers.com

COLLIERS INTERNATIONAL
4520 Main Street, Suite 1000
Kansas City, MO 64111
www.colliers.com

