



Land For Sale

4774 Bellview Road
Rogers, AR

KEY FEATURES/HIGHLIGHTS

PRICE > \$675,000

- > 1.30 +/- acres available
- > Located at Bellview Road, just off I-49
- > Close to an abundance of office and retail including Target, Cabelas, and the Pinnacle Promenade Mall
- > Excellent visibility from I-49 with 78,000 vehicles per day passing the site
- > Subject property and the surrounding neighborhood is in Northwest Arkansas' most dynamic growth area

STEVEN P. LANE
MANAGING DIRECTOR | ARKANSAS
DIR: 479 845 1515
MOB: 479 366 6000
steve.lane@colliers.com

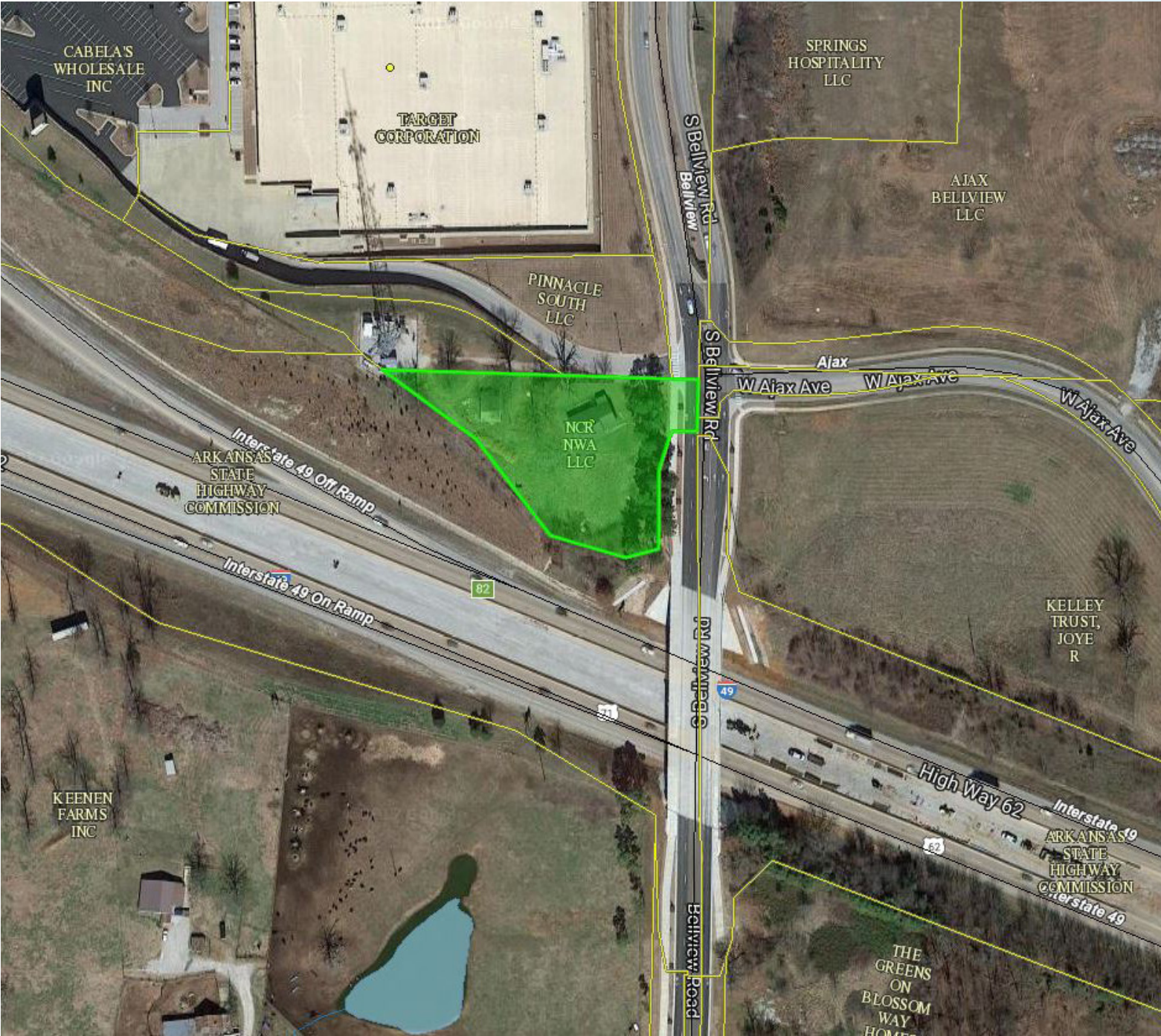
DARRYL NAPOLITANO
BROKERAGE & DEVELOPMENT | ARKANSAS
DIR: 479 845 1520
MOB: 479 544 2104
darryl.napolitano@colliers.com

COLLIERS INTERNATIONAL
4204 S Pinnacle Hills Pkwy, Ste 102
Rogers, AR 72758
479 636 9000
www.colliers.com/arkansas



Accelerating success.

PARCEL OUTLINE



Demographic	1 Mile	3 Miles	5 Miles
Estimated Population 2017	2,332	41,394	96,669
Projected Population 2022	2,691	46,797	108,293
Estimated Households 2017	813	15,310	34,927
Projected Households 2022	941	17,300	39,120
Average Estimated Household Income 2017	\$117,227	\$95,884	\$80,224

CONTACT US

STEVEN P. LANE
MOB: 479 366 6000
steve.lane@colliers.com

DARRYL NAPOLITANO
MOB: 479 544 2104
darryl.napolitano@colliers.com



COLLIERS INTERNATIONAL
4204 S Pinnacle Hills Pkwy, Ste 102
Rogers, AR 72758
479 636 9000
www.colliers.com/arkansas