

**FOR
LEASE**

ATHLOS BUILDING

918 WEST IDAHO STREET | BOISE, ID



PROPERTY INFORMATION

Type: Office

Parking: Limited number of executive spaces below building

More parking available in adjacent garage

SPACE AVAILABLE

Suite: 300

Size: 12,500-25,000 SF *

Rate: \$21.50 PSF FSEJ

* Expansion potential, call agent for details

HIGHLIGHTS

- » Gym, showers, lockers, bike lockers, and use of basketball court and field turf
- » Common conference rooms available
- » Open floor plan ideal for tech/modern companies
- » Largest single floor plate available in downtown Boise
- » Lowest load factor in all of Downtown Boise at 6.3%
- » Underground parking spaces for rent at \$110/month for regular sized vehicles
- » Ample garage parking available

Colliers
INTERNATIONAL

SCOTT FEIGNER
208 493 5107
scott.feighner@colliers.com

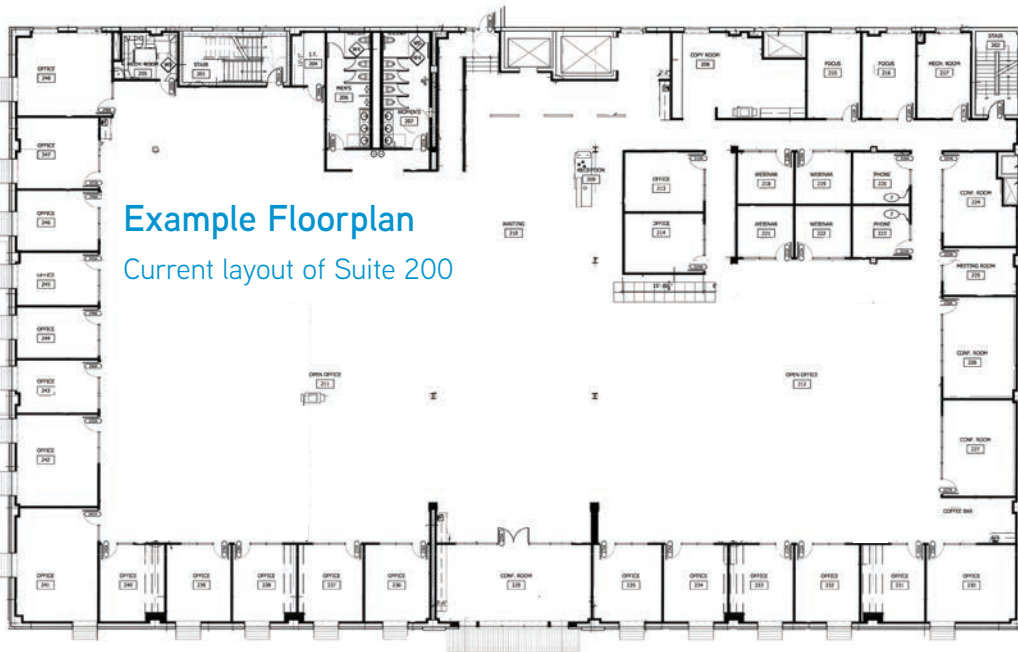
CLAY ANDERSON, MBA, CPA
208 489 6177
clay.anderson@colliers.com

**FOR
LEASE**

ATHLOS BUILDING

918 WEST IDAHO STREET | BOISE, ID

Colliers
INTERNATIONAL



SCOTT FEIGNER
208 493 5107
scott.feighner@colliers.com

CLAY ANDERSON, MBA, CPA
208 489 6177
clay.anderson@colliers.com

**FOR
LEASE**

ATHLOS BUILDING

918 WEST IDAHO STREET | BOISE, ID

Colliers
INTERNATIONAL



SCOTT FEIGNER
208 493 5107
scott.feighner@colliers.com

CLAY ANDERSON, MBA, CPA
208 489 6177
clay.anderson@colliers.com

**FOR
LEASE**

ATHLOS BUILDING

918 WEST IDAHO STREET | BOISE, ID

Colliers
INTERNATIONAL

Recent Downtown Boise Development



SCOTT FEIGNER
208 493 5107
scott.feigner@colliers.com

CLAY ANDERSON, MBA, CPA
208 489 6177
clay.anderson@colliers.com