

FOR SALE > 9.49 AC LAND

Central Avenue, Hot Springs, AR 71913



Site Size

- > +/- 9.49 acres

Zoning

- > C-4 - Regional Commercial

Sale Price

- > \$5.75/SF
- > Site may be subdivided. Pricing subject to lot size/ location

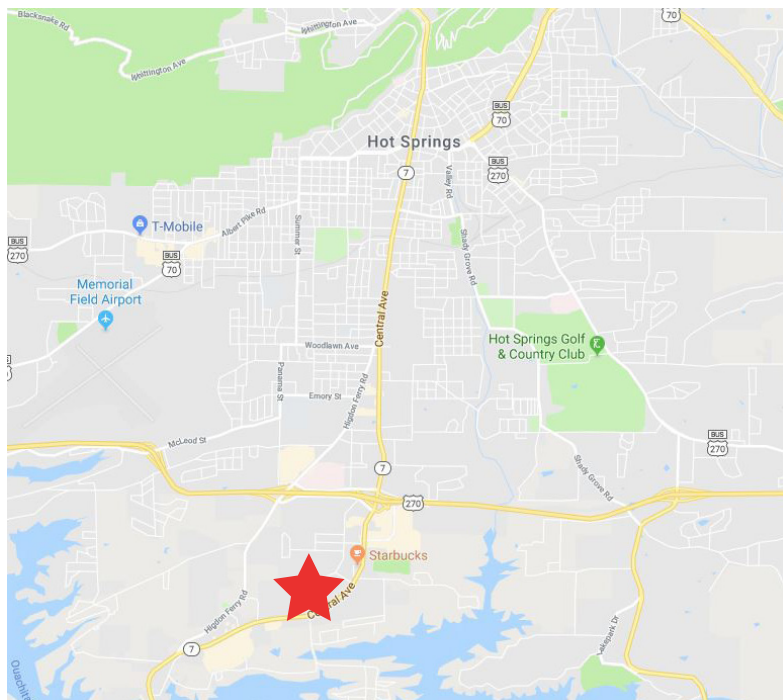
Site Features

- > Located just off Central Avenue, across from Hot Springs Mall and Walmart Super Center
- > Signalized entrance
- > Topography provides for good visibility from Central Avenue
- > Traffic count: approximately 22,000 vehicles per day along Central Avenue
- > Situated in middle of densely populated retail corridor

Demographics

2017	1 mile	3 mile	5 mile
Population	2,843	23,706	53,832
Total Households	1,563	10,879	23,418
Avg. Household Income	\$54,863	\$58,752	\$59,327

Central Avenue, Hot Springs, AR 71913

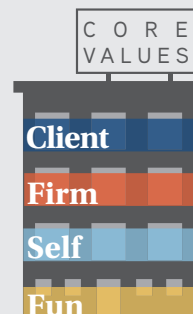


Contact Us

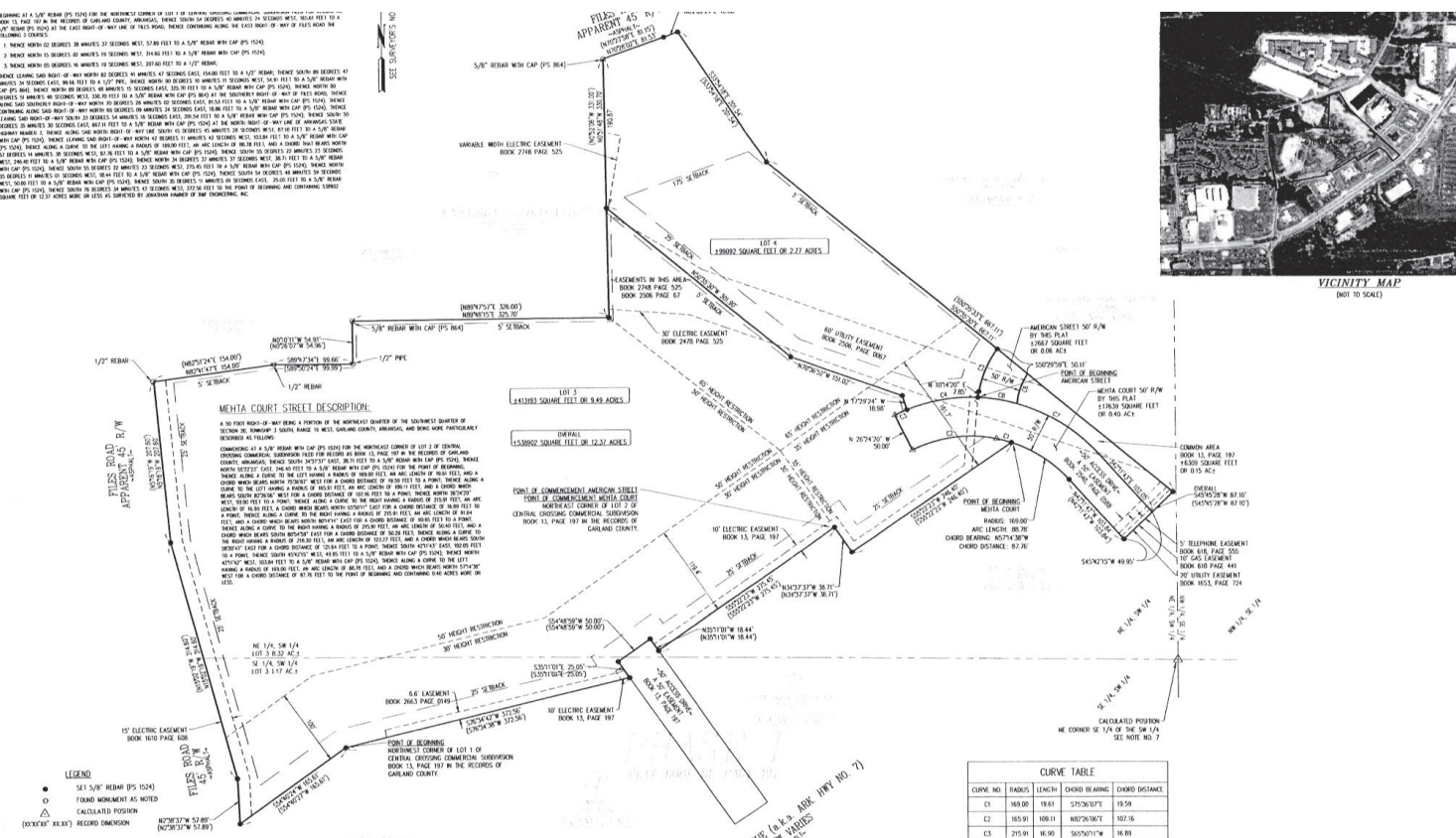
TODD RICE, CCIM
501 372 6161 | 702
todd.rice@colliers.com

CLARK IRWIN, CCIM
501 978 6588
clark.irwin@colliers.com

COLLIERS INTERNATIONAL
1 Allied Dr, Suite 1500
Little Rock, AR 72202
+1 501 372 6161
www.colliers.com/arkansas



This document has been prepared by Colliers International for advertising and general information only. Colliers International makes no guarantees, representations or warranties of any kind, expressed or implied, regarding the information including, but not limited to, warranties of content, accuracy and reliability. Any interested party should undertake their own inquiries as to the accuracy of the information. Colliers International excludes unequivocally all inferred or implied terms, conditions and warranties arising out of this document and excludes all liability for loss and damages arising there from. This publication is the copyrighted property of Colliers International and/or its licensor(s). ©2016. All rights reserved.



FOR SALE > 9.49 AC LAND

Central Avenue, Hot Springs, AR 71913



AERIAL

