



Land for Sale

Mountain Vista Land

3600 South, Vanderhall Drive | Provo, Utah 84606



Land for Sale

Summary

1.5 acres of industrial land in Provo, Utah, zoned planned industrial, manufacturing, and similar uses. This site offers direct access to I-15 and sits within a growing development area that's attracting a range of new businesses. Ideal for a freestanding owner-user building or a build-to-suit opportunity.

Contact Us:

Jarrod Hunt

Vice Chair
+1 801 787 8940
jarrod.hunt@colliers.com

Andy Blunt

Vice President
+ 801 870 9648
andy.blunt@colliers.com

Lana Howell

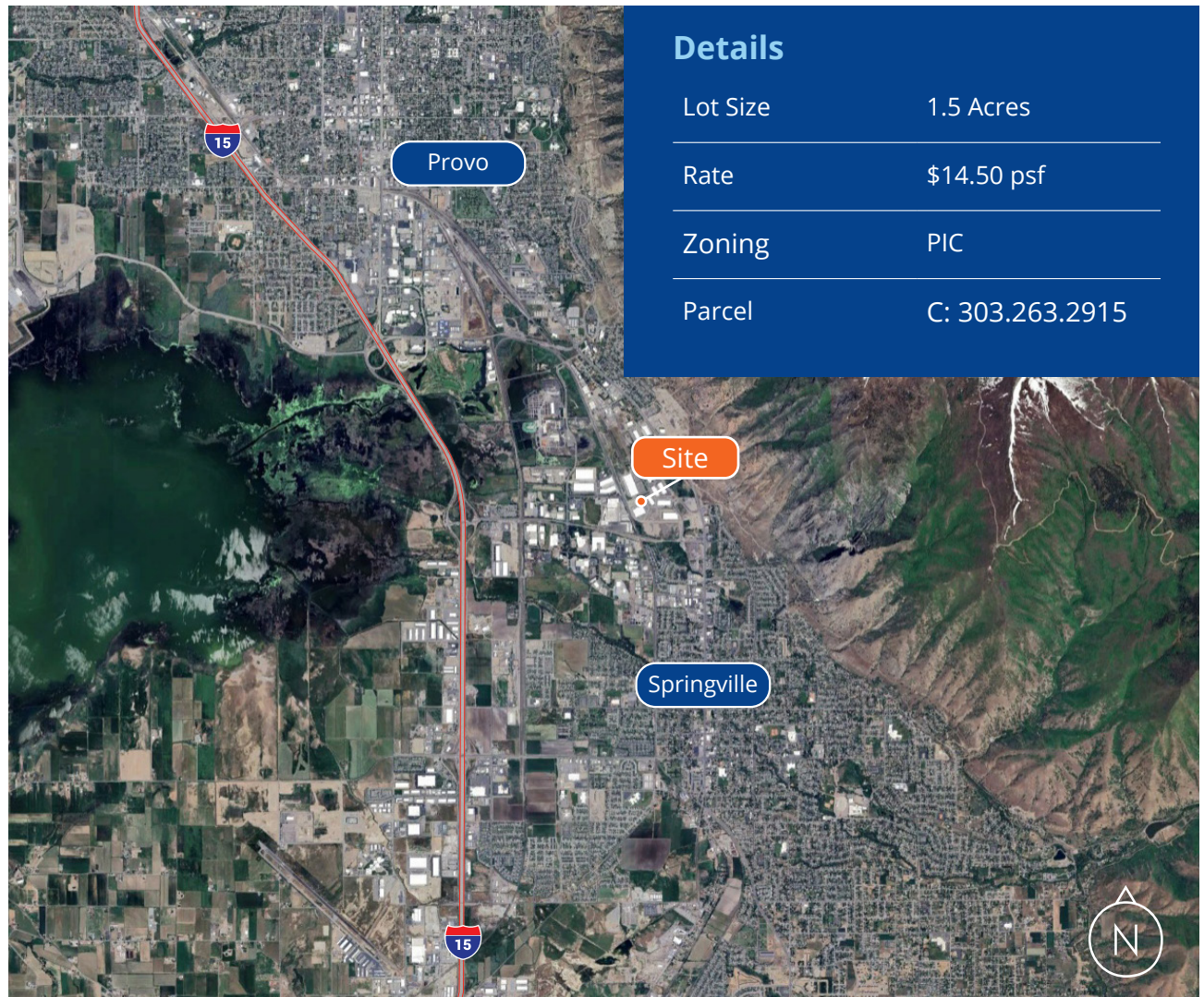
Senior Director of T.M.
+1 801 453 6857
lana.howell@colliers.com

Colliers

2100 Pleasant Grove Blvd. | Suite 200
Pleasant Grove, UT 84062
Main: +1 801 947 8300
colliers.com

Highlights

- Flat, well-shaped lot - easy for site planning and construction
- Direct access to I-15
- Located in a growing development area with strong business activity
- Ideal for freestanding building
- Zoned for industrial, manufacturing, and similar uses.



This document has been prepared by Colliers International for advertising and general information only. Colliers International makes no guarantees, representations or warranties of any kind, expressed or implied, regarding the information including, but not limited to, warranties of content, accuracy and reliability. Any interested party should undertake their own inquiries as to the accuracy of the information. Colliers International excludes unequivocally all inferred or implied terms, conditions and warranties arising out of this document and excludes all liability for loss and damages arising there from. This publication is the copyrighted property of Colliers International and/or its licensor(s). ©2025. All rights reserved.