

**FOR LEASE**

*Lynnhaven Corporate Center II*  
**760 Lynnhaven Parkway**  
Virginia Beach, VA

**Ricky Anderson**

Executive Vice President  
+1 757 217 1892  
[ricky.anderson@colliers.com](mailto:ricky.anderson@colliers.com)

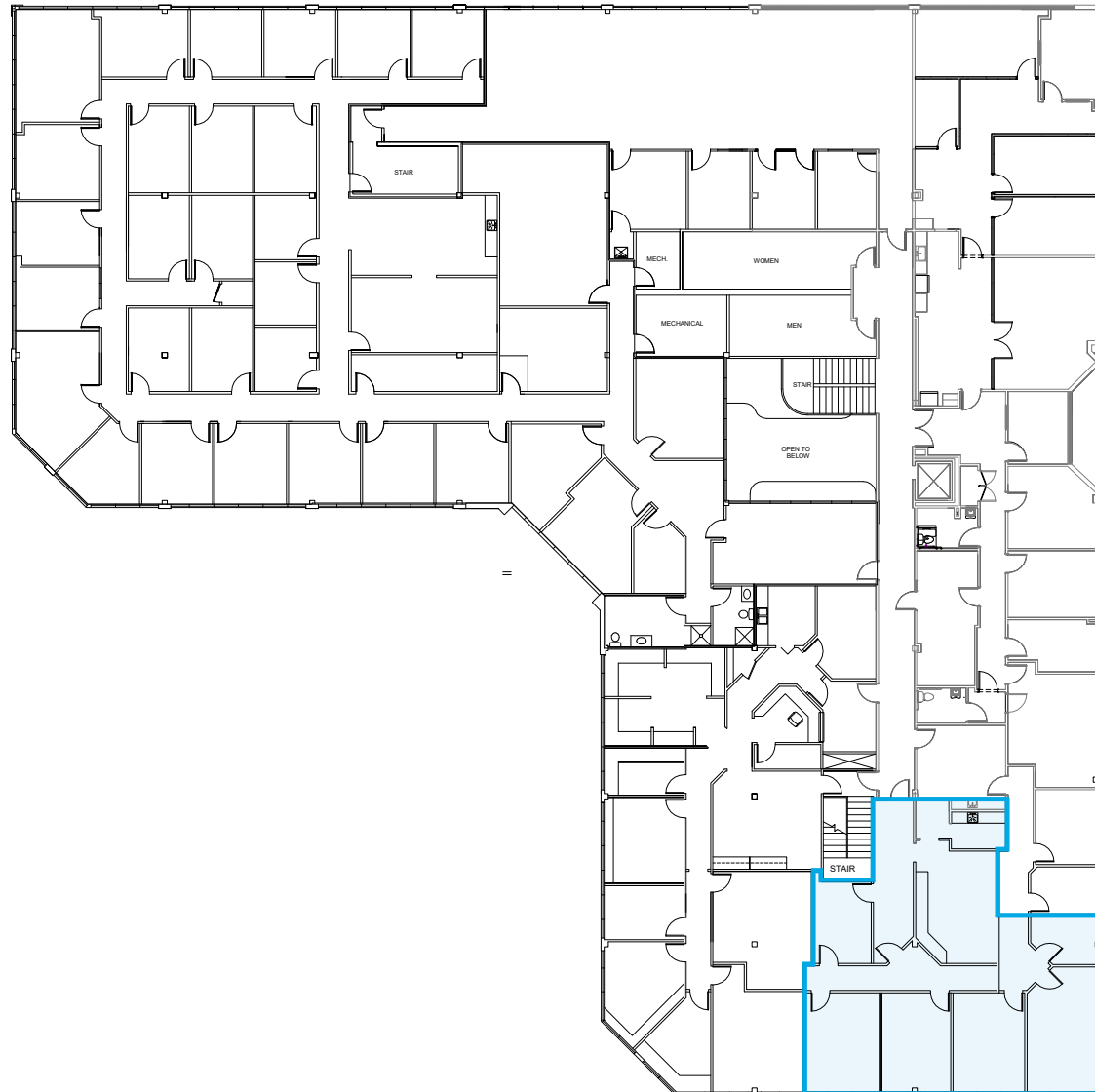
150 West Main Street  
Suite 1100  
Norfolk, VA 23510  
P: +1 757 490 3300

# Features

- Two story, ±38,907 RSF building
- Available Space:
  - Second Floor: ±2,044 RSF
- Quality brick and glass construction
- Free and abundant parking
- Recently updated common areas
- Locally owned and professionally managed/maintained
- Centrally located in the Lynnhaven submarket of Virginia Beach
- Rental Rate: \$18.50 PSF, Full Service

## Second Floor Plan

Suite 205: ± 2,044 RSF







Colliers

150 West Main Street  
Suite 1100  
Norfolk, VA 23510  
P: +1 757 490 3300

**Ricky Anderson**

Executive Vice President  
+ 1 757 217 1892  
[ricky.anderson@colliers.com](mailto:ricky.anderson@colliers.com)