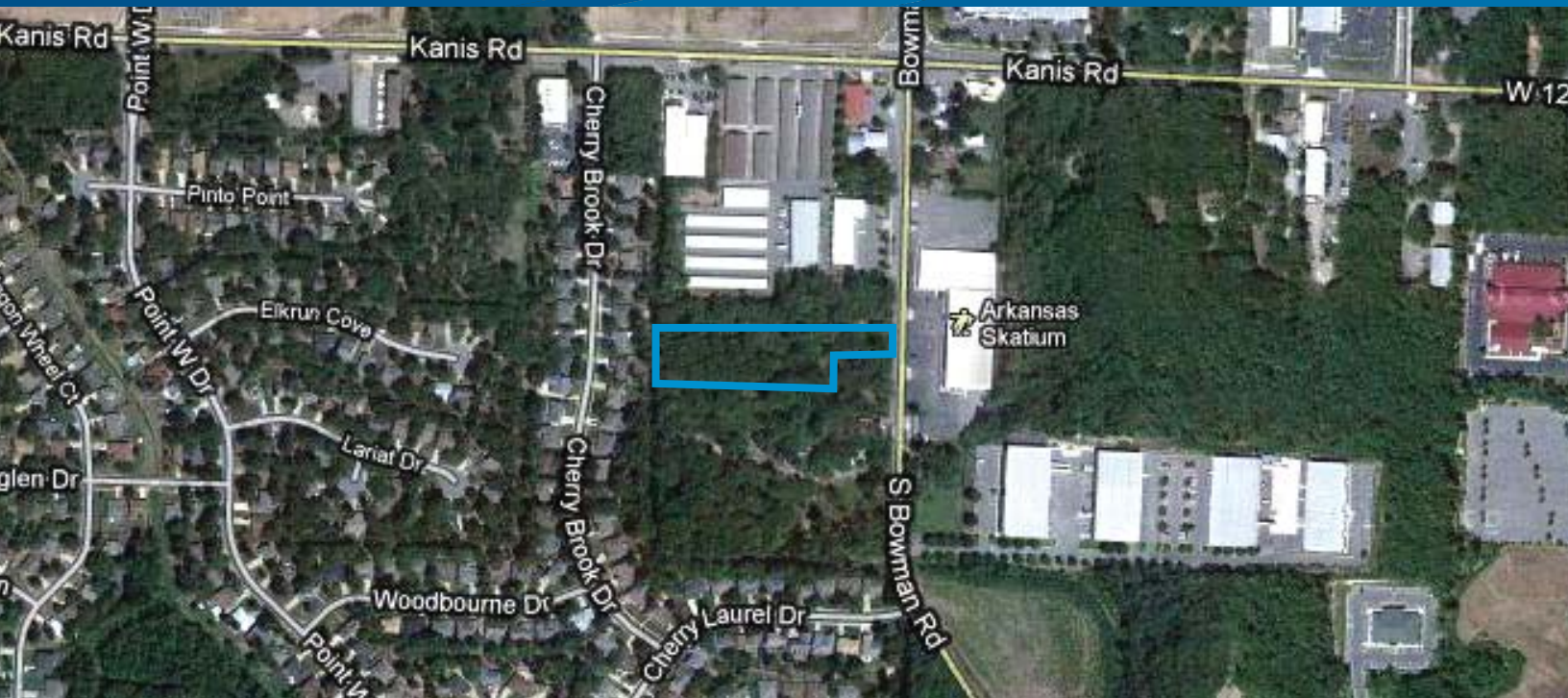


FOR SALE



West Little Rock Land 2.2 Acres

1400 SOUTH BOWMAN ROAD, LITTLE ROCK, AR 72211



Price

\$400,000 (\$4.17/SF)

Site Information

- › Zoned "PCD" Planned Commercial Development
- › Just south of Kanis Rd. & Bowman Rd. intersection
- › Land area: 2.2 Acres
- › Approximately 95,832 SF of land
- › Frontage: Approximately 200 ft. on Bowman Rd.

Contact Us

LISTING AGENT:

KEVIN HUCHINGSON, CCIM, SIOR

501 372 6161 | EXT. 708

LITTLE ROCK, AR

kevin.huchingson@colliers.com

LISTING AGENT:

MASON LEWIS

501 372 6161 | EXT. 741

LITTLE ROCK, AR

mason.lewis@colliers.com

This document has been prepared by Colliers International for advertising and general information only. Colliers International makes no guarantees, representations or warranties of any kind, expressed or implied, regarding the information including, but not limited to, warranties of content, accuracy and reliability. Any interested party should undertake their own inquiries as to the accuracy of the information. Colliers International excludes unequivocally all inferred or implied terms, conditions and warranties arising out of this document and excludes all liability for loss and damages arising there from.

COLLIERS INTERNATIONAL

1 Allied Drive, Suite 1500

Little Rock, AR 72202

www.colliers.com/littlerock