

Colliers

Accelerating success



Northpointe Center

100-400 Northpointe Circle, Seven Fields PA 16066

Office Space for Lease

Colliers

525 William Penn Place
Suite #3510
Pittsburgh, PA 15219
colliers.com/pittsburgh

Diron Duah

Associate
Office Agency
412 235 9769
diron.duah@colliers.com

Northpointe Center:

your choice for Class A professional office and medical space nestled in Pittsburgh's North Hills submarket, centrally located in a quiet and scenic campus.

Situated directly off Route 228 and minutes from the heart of Cranberry Township, Northpointe Center offers tenants a variety of office opportunities across four separate buildings.

Campus Features:

- Ample and free onsite parking
- Onsite property management
- 24-hour monitored security system
- Landscaped, park-like environment
- Onsite cafe, brewery, and bank
- Direct access to Route 228

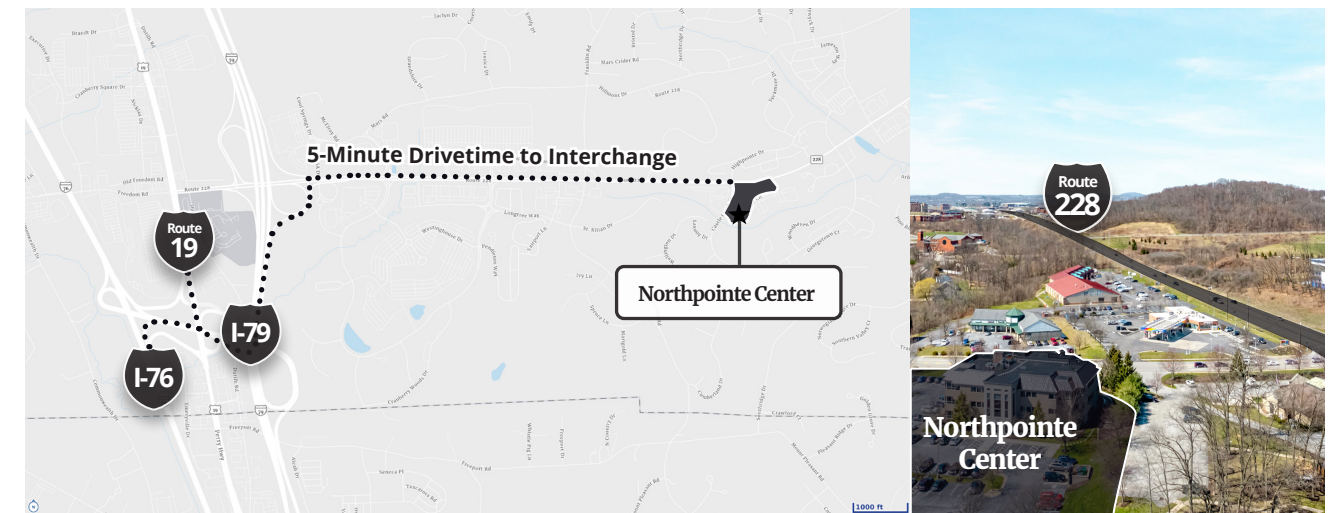


Availabilities ranging from 500 to 10,374 square feet.

Larger spaces can be accommodated, contact our brokers for more information.

Location & Access:

Tenants will benefit from immediate access to Route 228, which provides a convenient five-minute drive-time to the I-79, I-76, and Route 19 interchange for commuter's convenience.



Onsite & Nearby Amenities:

At Northpointe Center, you're within a 2-minute drive-time of multiple cafes, banking institutions, restaurants, fitness centers, and retailers!

Cranberry Township's bustling commercial strip is just 2 miles to the east, offering incredible access to hundreds of amenities, including the following major retailers:



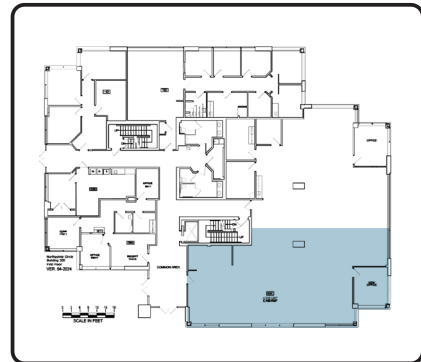
Northpointe Center

Building 200

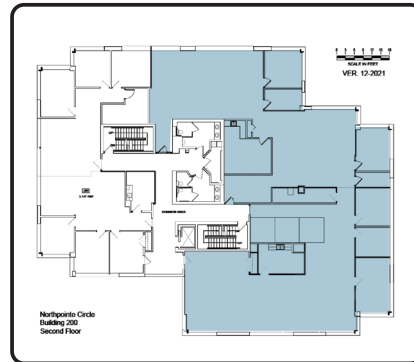
30,728-square-foot building offering three stories of office space between buildings 100 and 300 on Northpointe Circle.



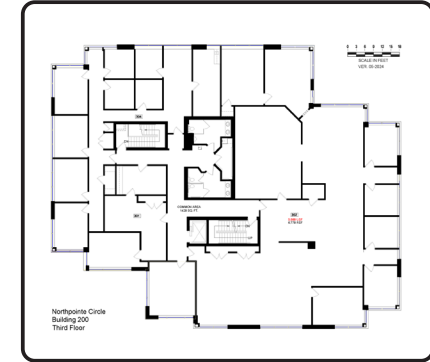
Floor 1



Floor 2



Floor 3



Current Availabilities

- **1st Floor:** 2,479 sq. ft.
Open plan layout, one partitioned office
- **2nd Floor:** 7,230 sq. ft.
Open plan layout, five partitioned offices, break area, conference room

Property Notes:

- Backup generator
- Drop ceilings
- Carpeted flooring
- Expansive windows
- 175 parking spaces

Northpointe Center

Building 400

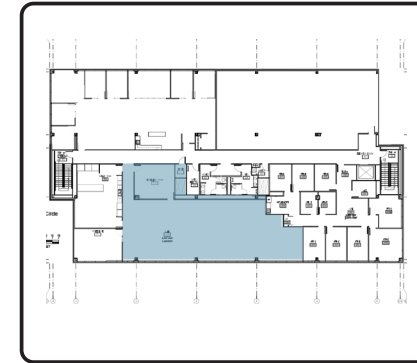
30,728-square-foot building offering three stories of office space adjacent to Building 300 on Northpointe Circle.



Floor 2



Floor 3



Current Availabilities

- **2nd Floor:** 2,420 sq. ft.
Open plan layout, two partitioned spaces, reception/lobby area
- **3rd Floor:** 2,531 sq. ft.
Open plan layout, five partitioned offices, break area, conference room

Property Notes:

- Energy-efficient HVAC
- High-tech security
- Drop ceilings
- Carpeted flooring
- 167 parking spaces

Northpointe Center



Contact our team for further information or to
schedule a tour today.

Colliers

525 William Penn Place
Suite #3510
Pittsburgh, PA 15219
colliers.com/pittsburgh

Diron Duah

Associate
Office Agency
412 235 9769
diron.duah@colliers.com