

FOR SUBLEASE > SUITE 1200

Fully Furnished Sublease Opportunity



1900 AVENUE OF THE STARS | LOS ANGELES, CA



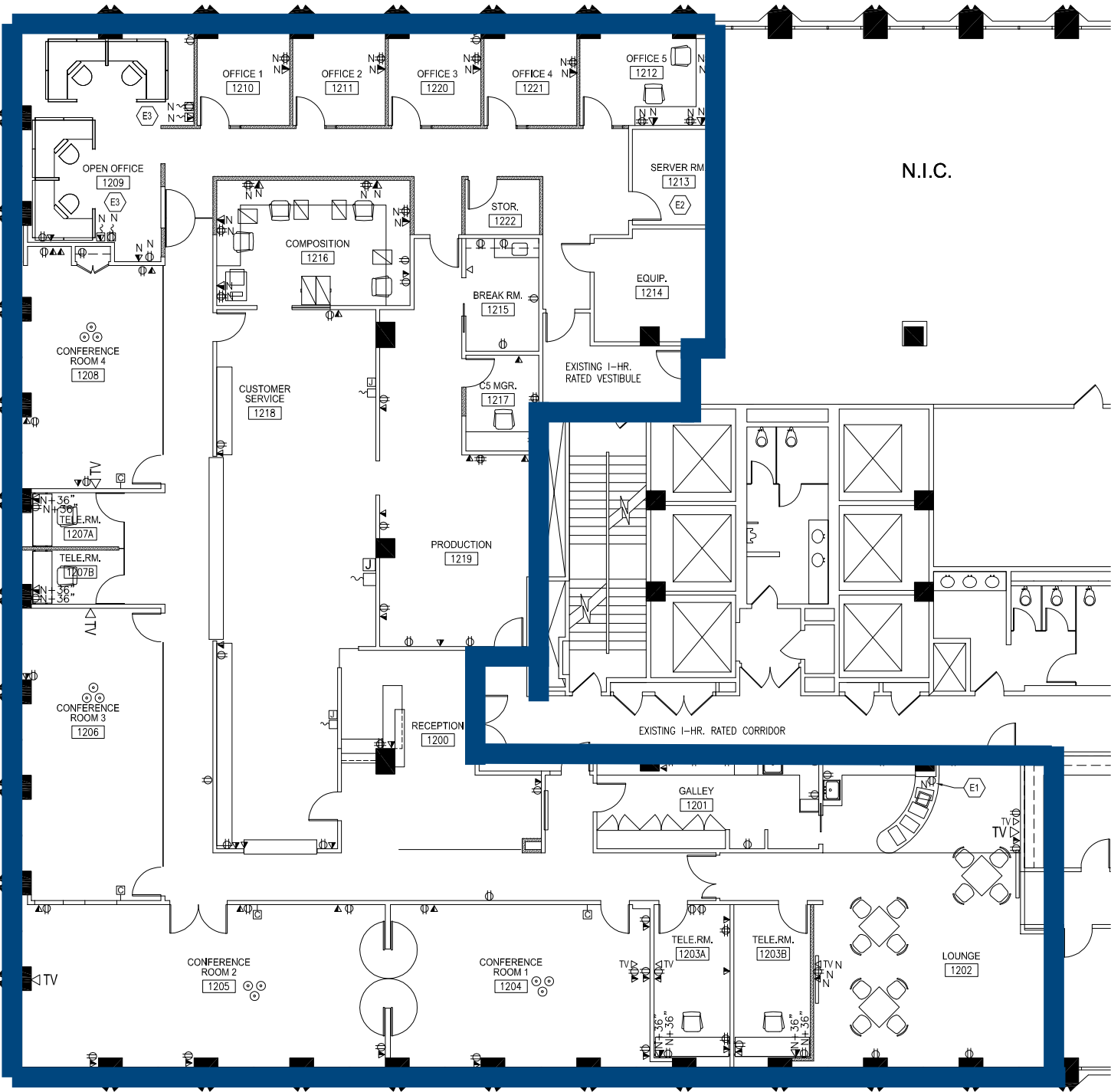
- > Suite | 1200
 - > Available SF | 9,944 SF
 - > Rate | \$2.95 PSF FSG
 - > Term | Through February 28, 2019
 - > Availability | 60-90 days
 - > Parking Rate & Ratio | 2.5/1,000 SF
- Unreserved: \$230/mo., Reserved: \$380/mo.

Highlights

- > Newly renovated building lobby
- > Great views of Beverly Hills, LA Country Club and the Pacific Ocean
- > Efficient layout with abundant glass line
- > Directly adjacent to Westfield Century City Mall
- > On-site convenience store and cafe

| INTERIOR PHOTOS







NATHAN PELLOW

Executive Vice President

License No. 01215721

213 532 3213

nathan.pellow@colliers.com

JAMES ROBBINS

Senior Associate

License No. 01944738

213 532 3269

james.robbs@colliers.com

PATRICK MOODY

Associate

License No. 02024230

213 327 3269

patrick.moody@colliers.com

